

# Summary report

Specialist medical colleges' specialist  
pathway data

Reporting period: 1 January 2023 – 31 December 2023

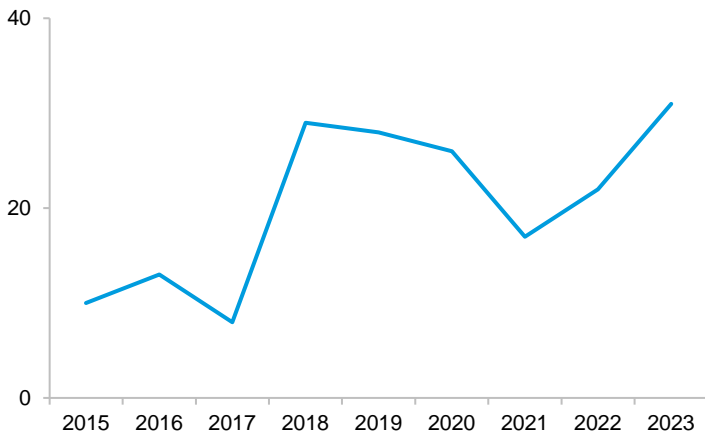
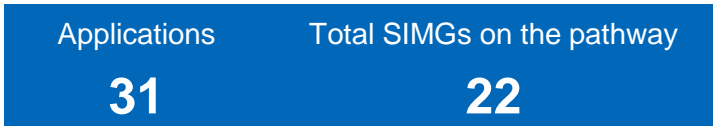


Medical Board  
Ahpra

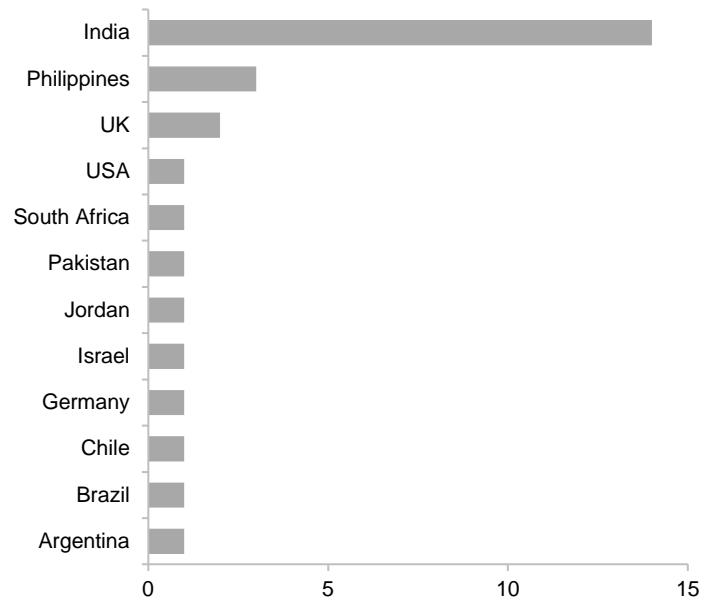
### **List of college abbreviations**

ACD	Australasian College of Dermatologists
ACEM	Australasian College for Emergency Medicine
ACRRM	Australian College of Rural and Remote Medicine
ACSEP	Australasian College of Sport and Exercise Physicians
ANZCA	Australian and New Zealand College of Anaesthetists
CICM	College of Intensive Care Medicine of Australia and New Zealand
RACDS	Royal Australasian College of Dental Surgeons
RACGP	The Royal Australian College of General Practitioners
RACMA	The Royal Australasian College of Medical Administrators
RACP	The Royal Australasian College of Physicians
RACS	Royal Australasian College of Surgeons
RANZCO	The Royal Australian and New Zealand College of Ophthalmologists
RANZCOG	The Royal Australian and New Zealand College of Obstetricians and Gynaecologists
RANZCP	The Royal Australian and New Zealand College of Psychiatrists
RANZCR	The Royal Australian and New Zealand College of Radiologists
RCPA	The Royal College of Pathologists of Australasia

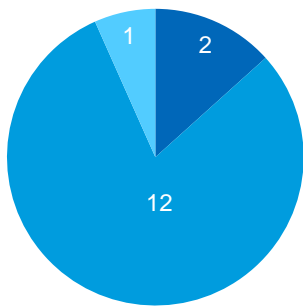
### Number of applications



### Country of specialist qualification (top 12)

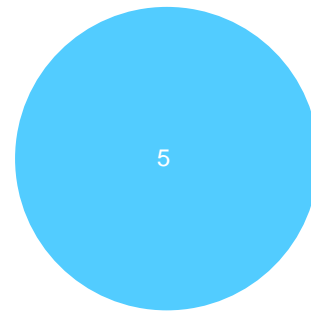


### Interim assessment outcome



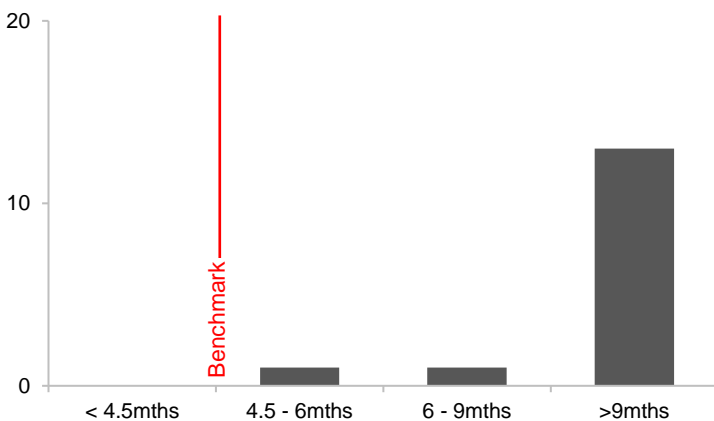
● Substantially comparable ● Partially comparable ● Not comparable

### Recommended for specialist recognition

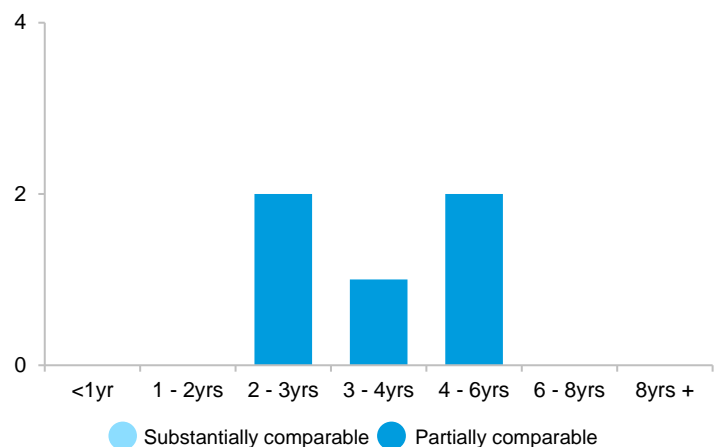


● Recommended ● Not recommended

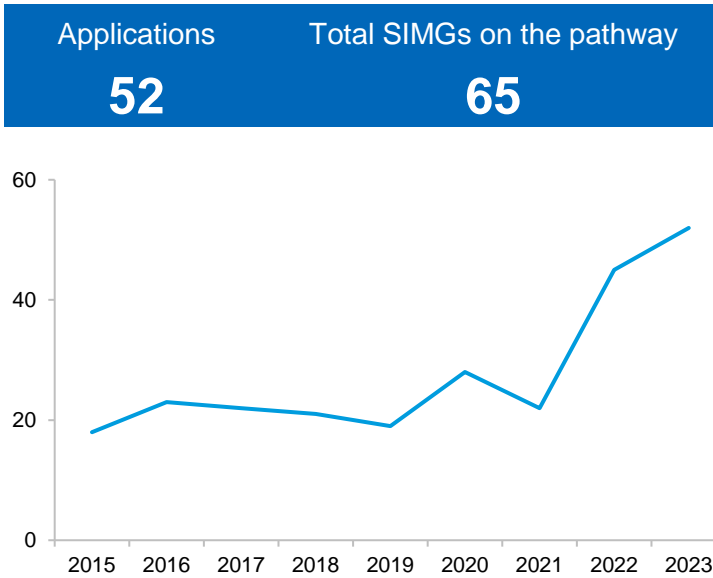
### SIMGs starting in 2023: Time for interim assessment



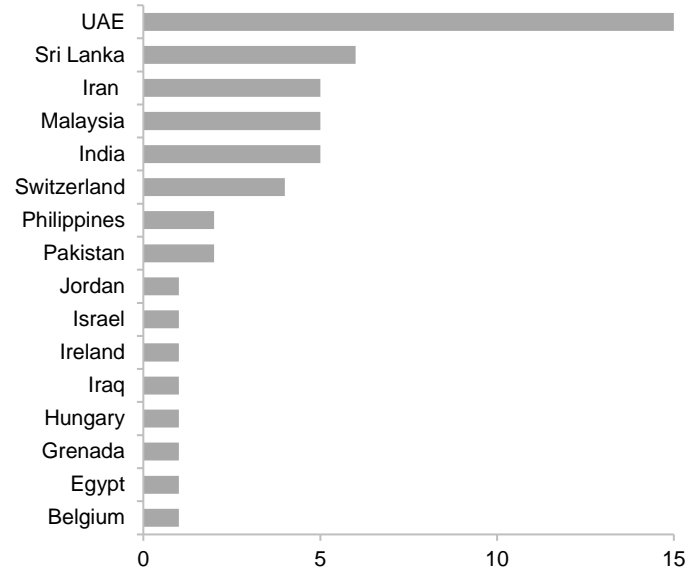
### SIMGs finishing in 2023: Total time on pathway



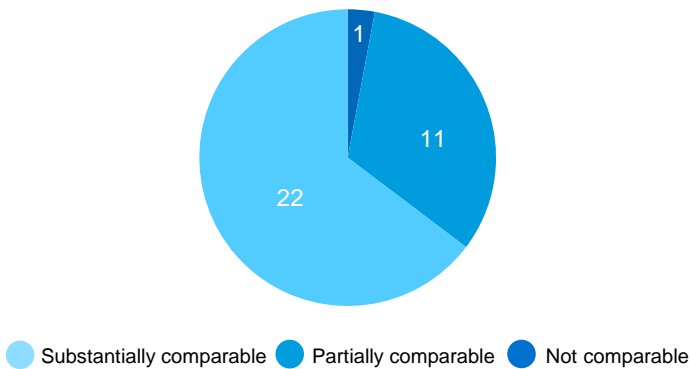
### Number of applications



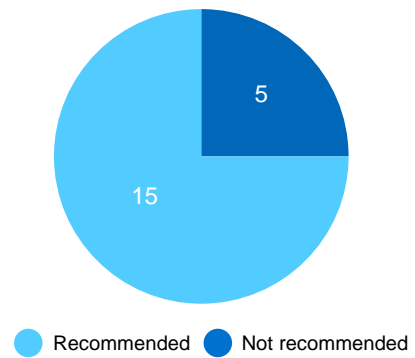
### Country of specialist qualification (top 16)



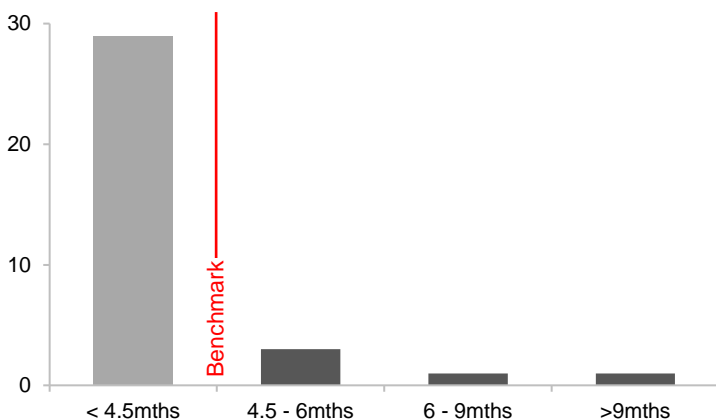
### Interim assessment outcome



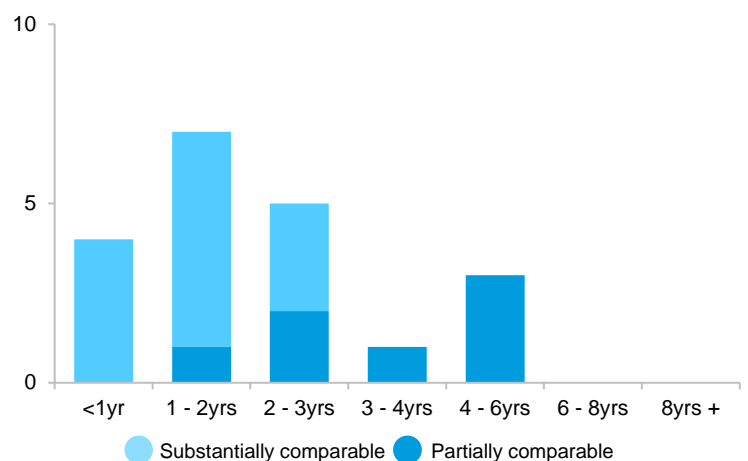
### Recommended for specialist recognition



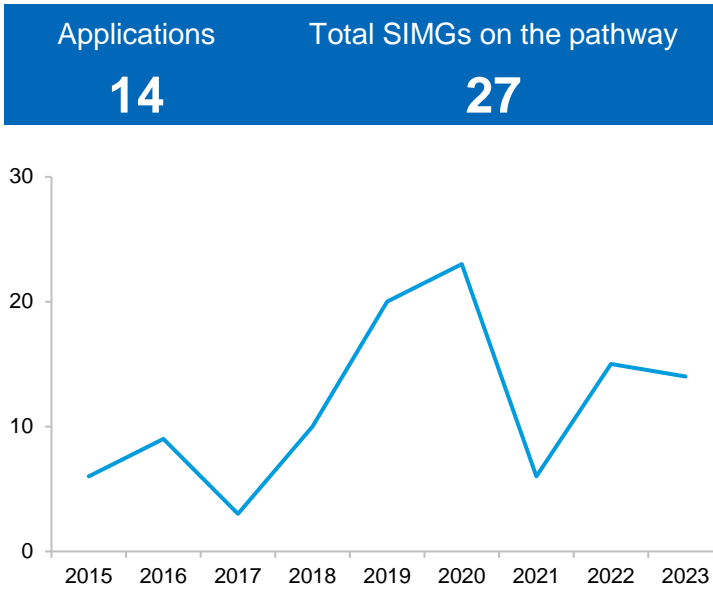
### SIMGs starting in 2023: Time for interim assessment



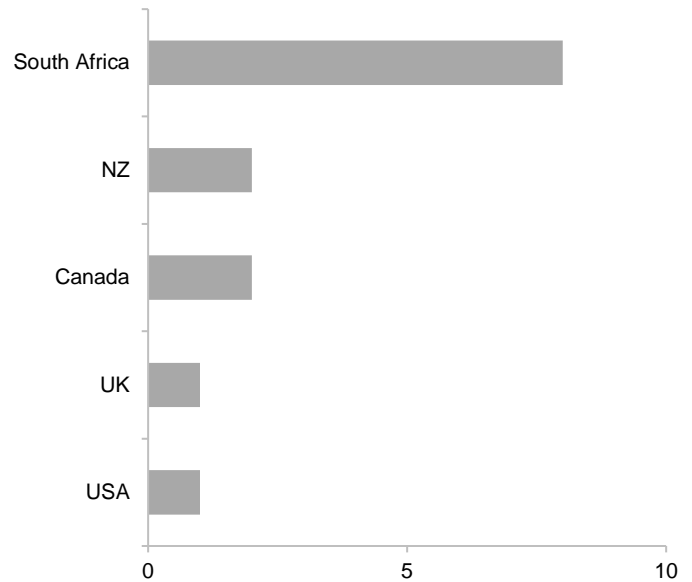
### SIMGs finishing in 2023: Total time on pathway



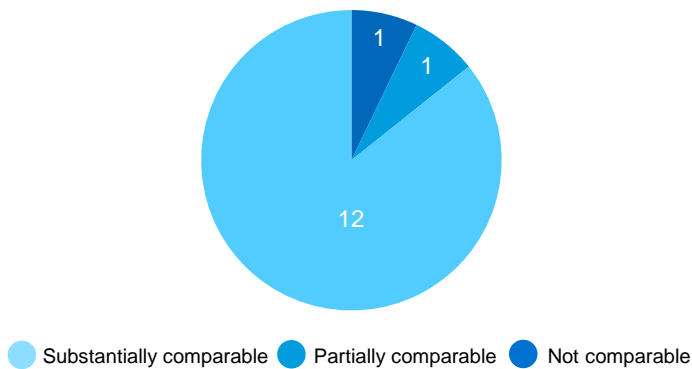
### Number of applications



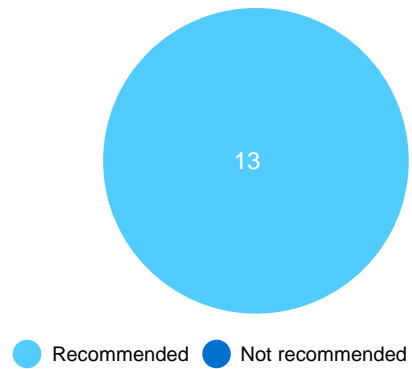
### Country of specialist qualification (top 5)



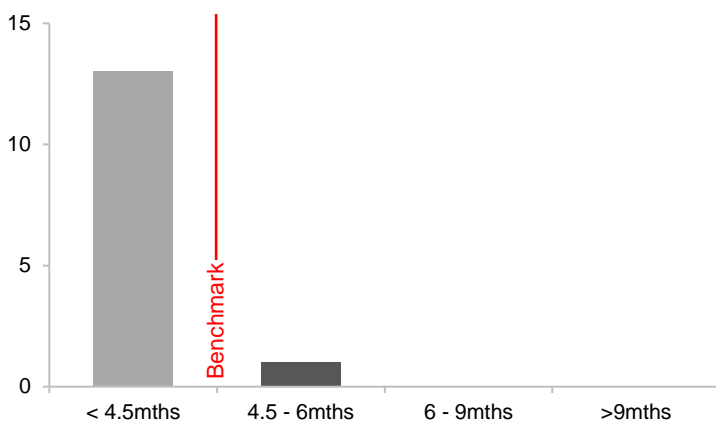
### Interim assessment outcome



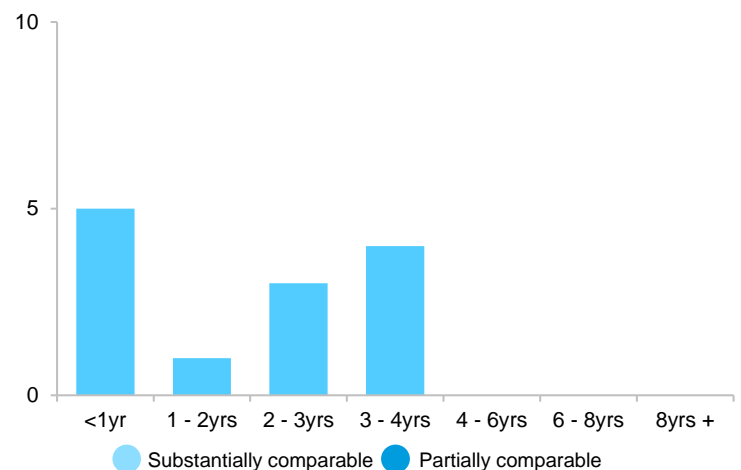
### Recommended for specialist recognition



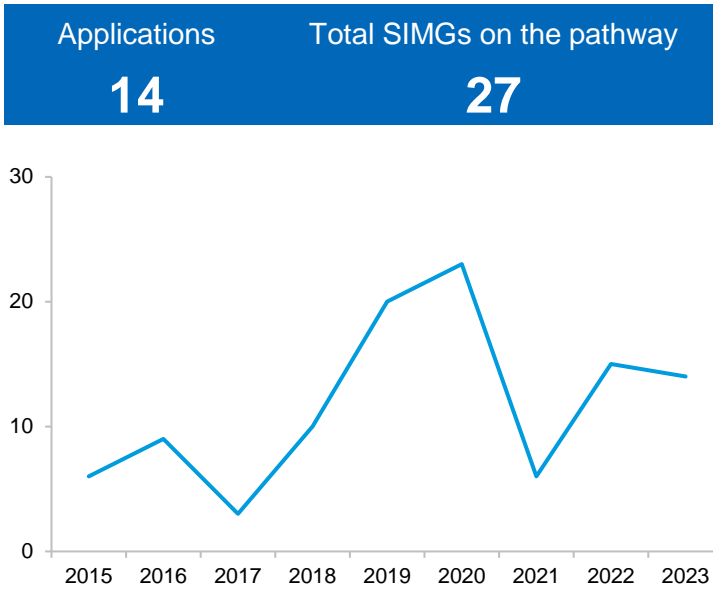
### SIMGs starting in 2023: Time for interim assessment



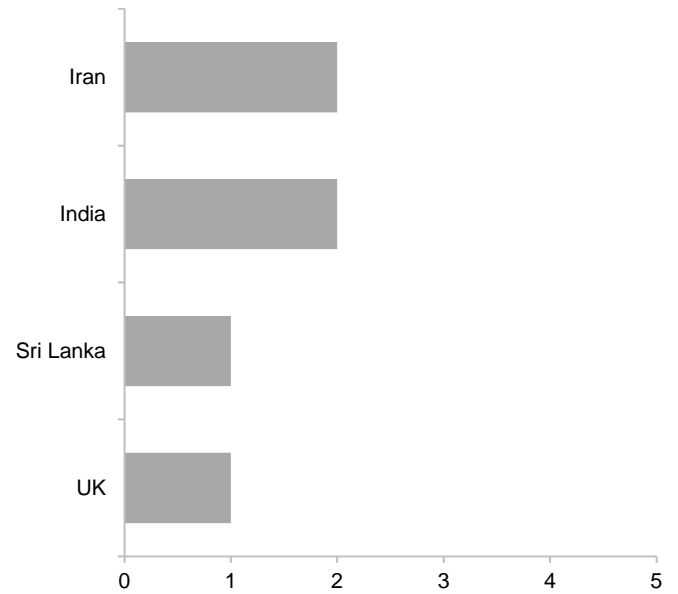
### SIMGs finishing in 2023: Total time on pathway



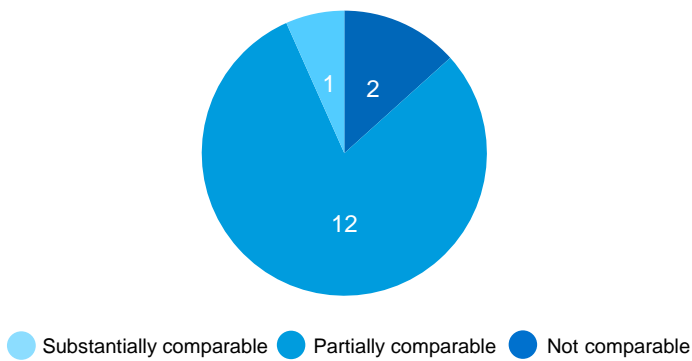
### Number of applications



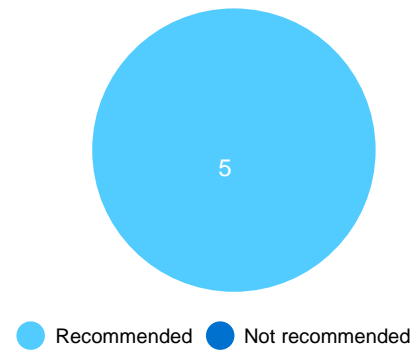
### Country of specialist qualification (top 4)



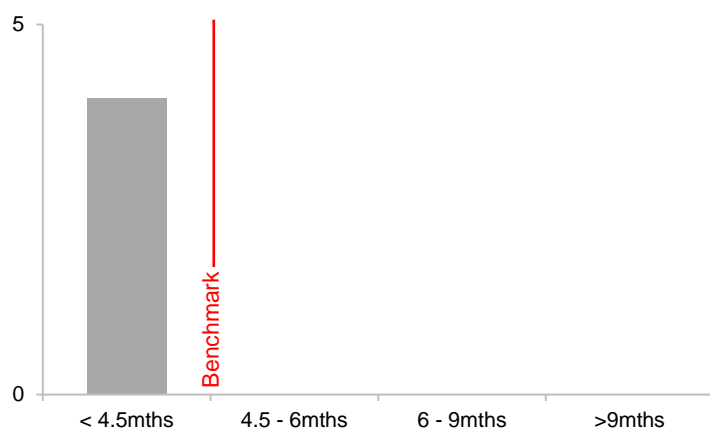
### Interim assessment outcome



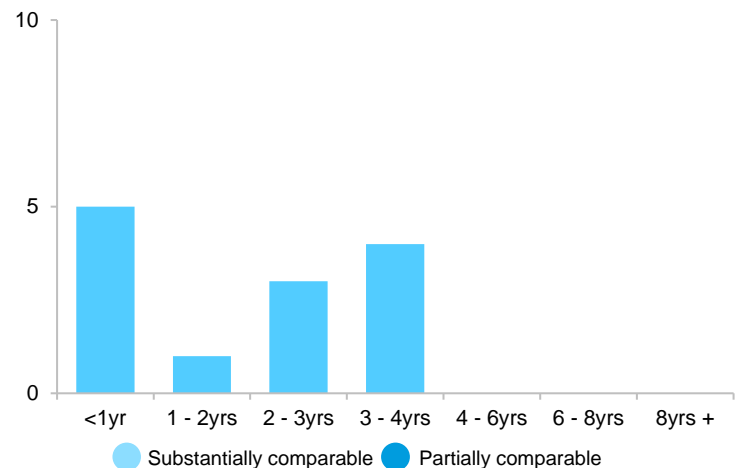
### Recommended for specialist recognition



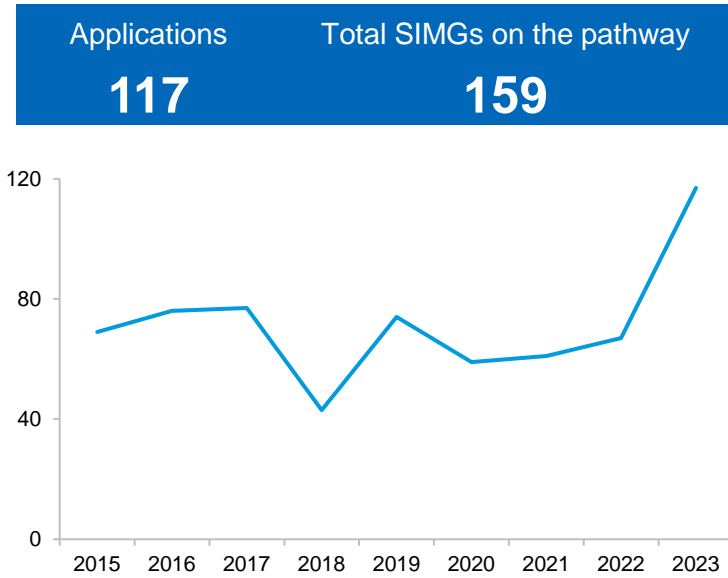
### SIMGs starting in 2023: Time for interim assessment



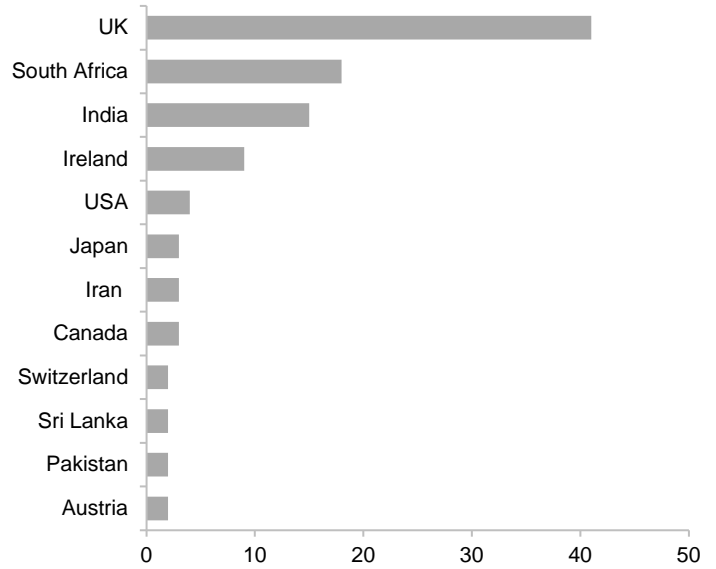
### SIMGs finishing in 2023: Total time on pathway



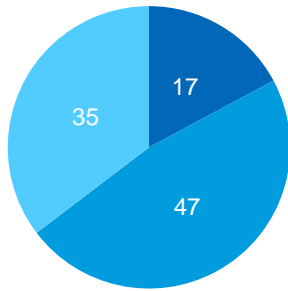
### Number of applications



### Country of specialist qualification (top 12)

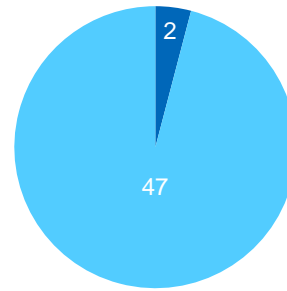


### Interim assessment outcome



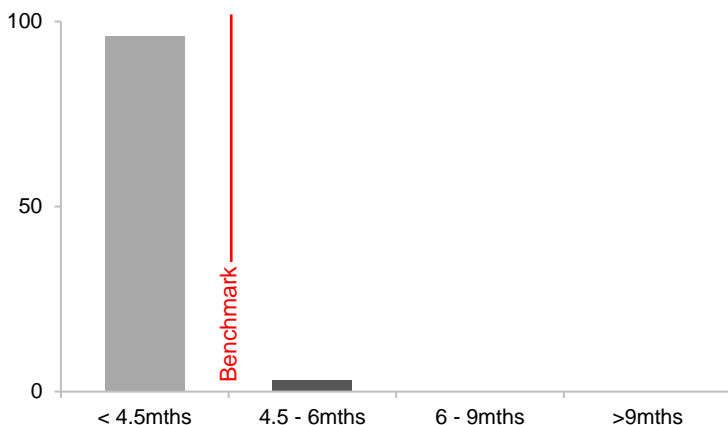
● Substantially comparable ● Partially comparable ● Not comparable

### Recommended for specialist recognition

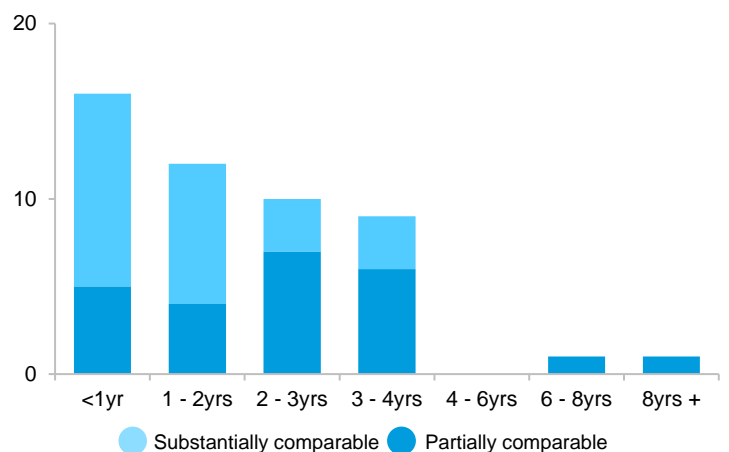


● Recommended ● Not recommended

### SIMGs starting in 2023: Time for interim assessment

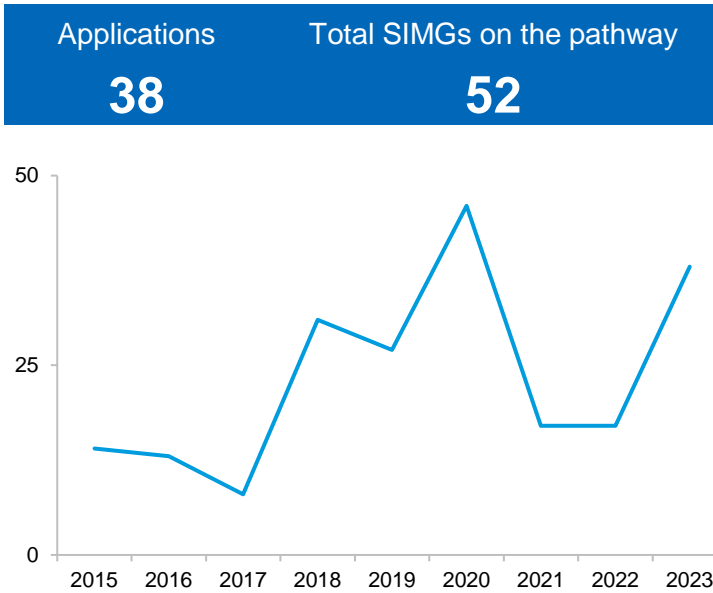


### SIMGs finishing in 2023: Total time on pathway

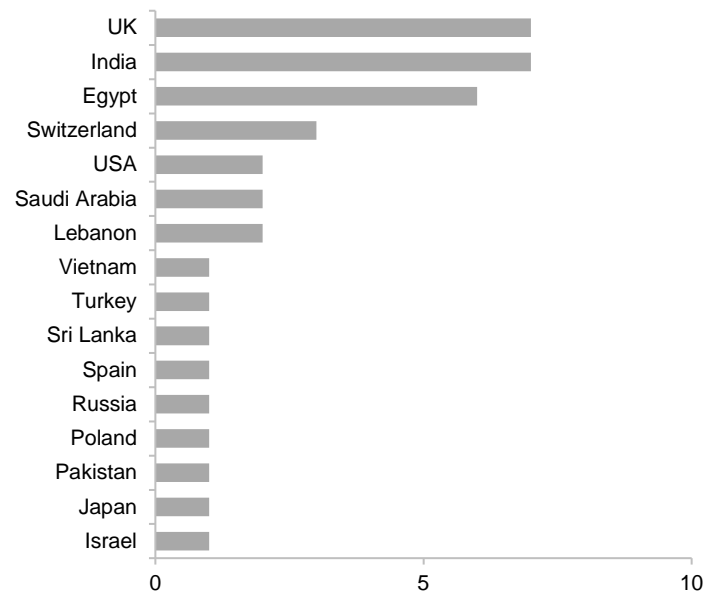


● Substantially comparable ● Partially comparable

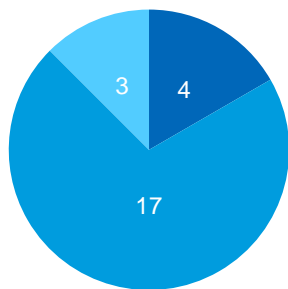
### Number of applications



### Country of specialist qualification (top 16)

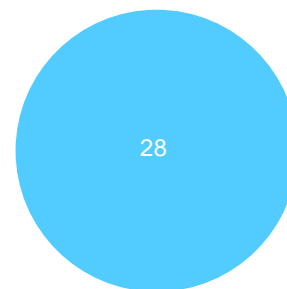


### Interim assessment outcome



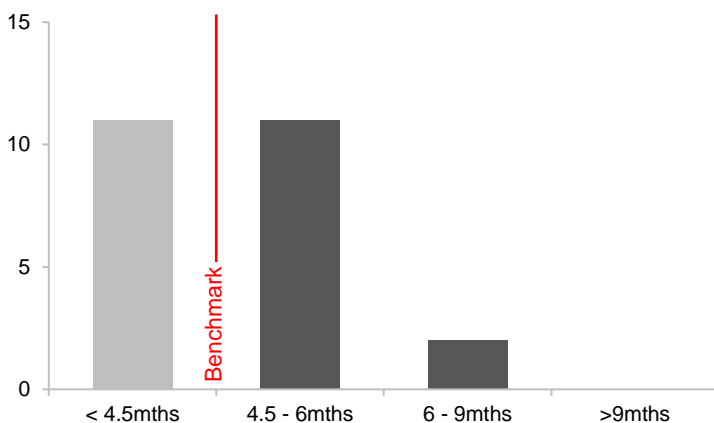
● Substantially comparable ● Partially comparable ● Not comparable

### Recommended for specialist recognition

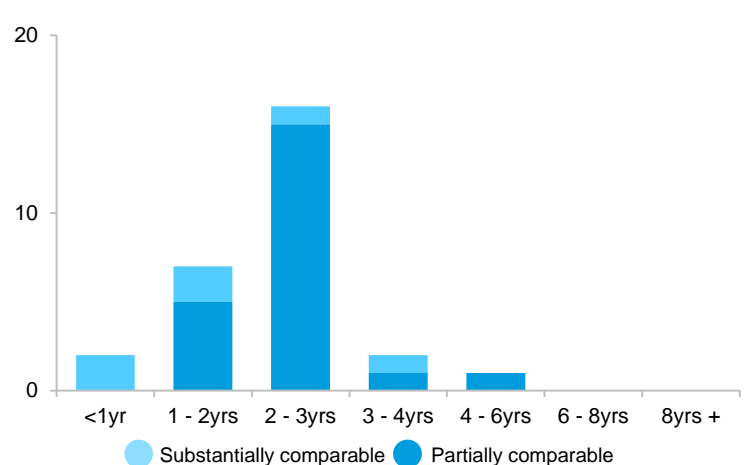


● Recommended ● Not recommended

### SIMGs starting in 2023: Time for interim assessment



### SIMGs finishing in 2023: Total time on pathway



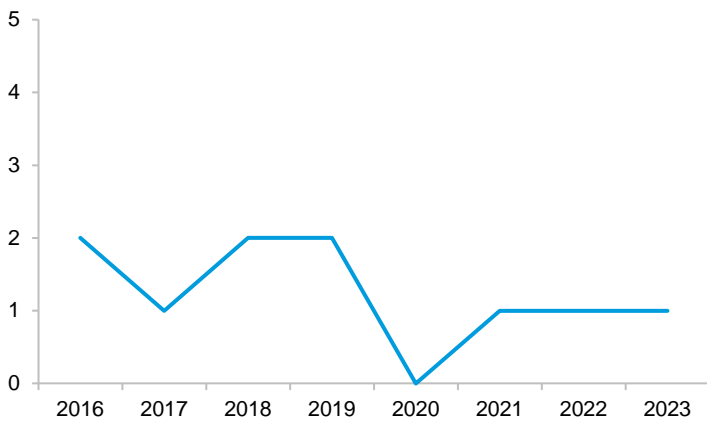
● Substantially comparable ● Partially comparable



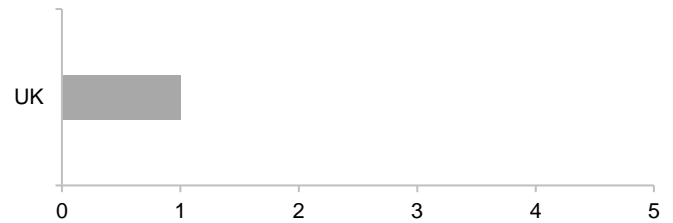
### Number of applications

### Country of specialist qualification

Applications	Total SIMGs on the pathway
1	0

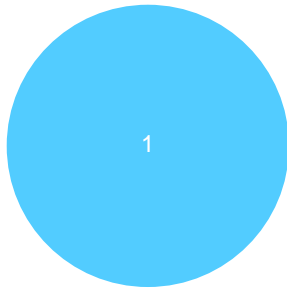


Note: RACDS data not collected in 2015

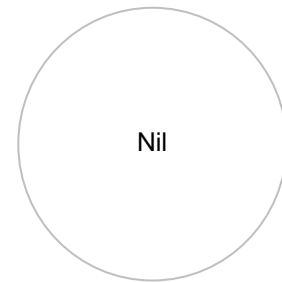


### Interim assessment outcome

### Recommended for specialist recognition



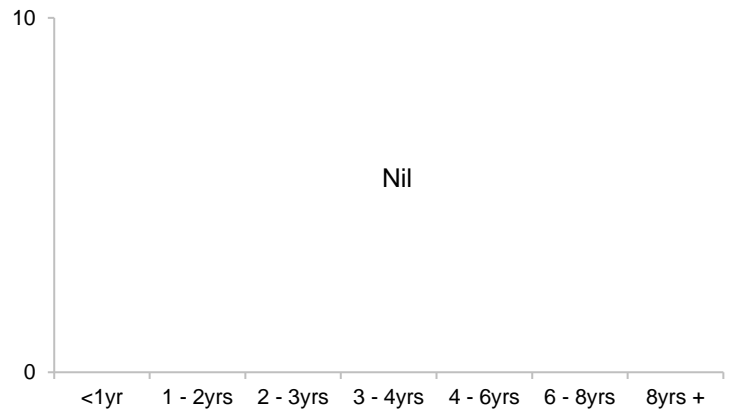
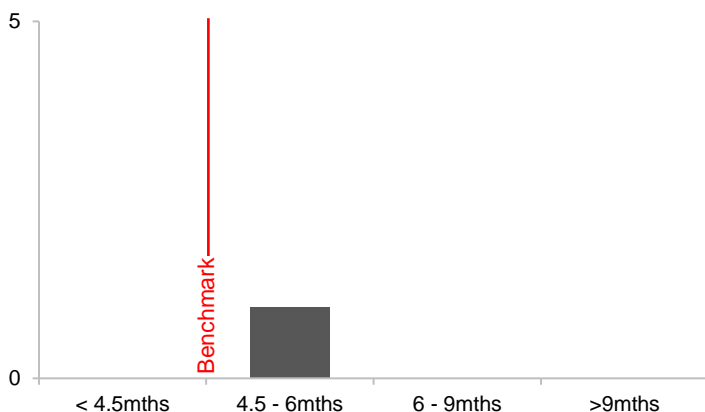
● Substantially comparable ● Partially comparable ● Not comparable



● Recommended ● Not recommended

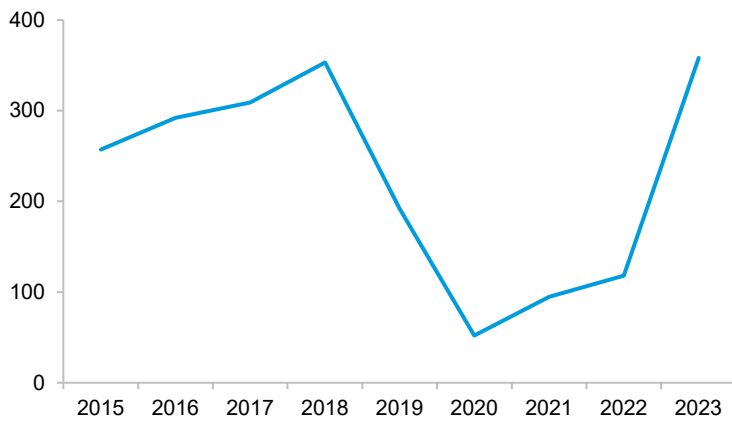
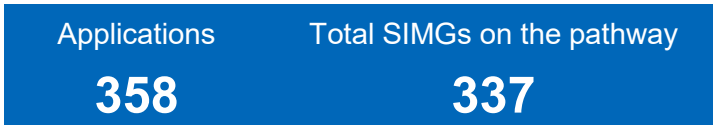
### SIMGs starting in 2023: Time for interim assessment

### SIMGs finishing in 2023: Total time on pathway

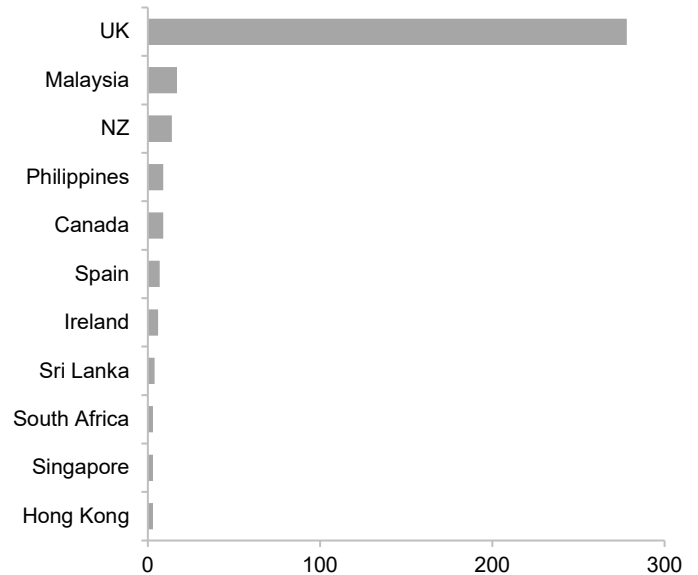


● Substantially comparable ● Partially comparable

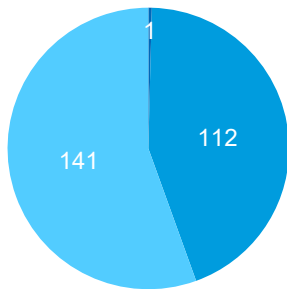
### Number of applications



### Country of specialist qualification (top 11)

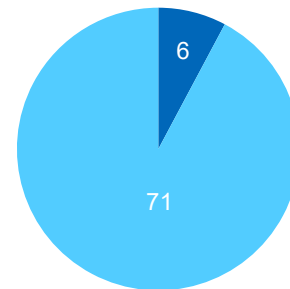


### Interim assessment outcome



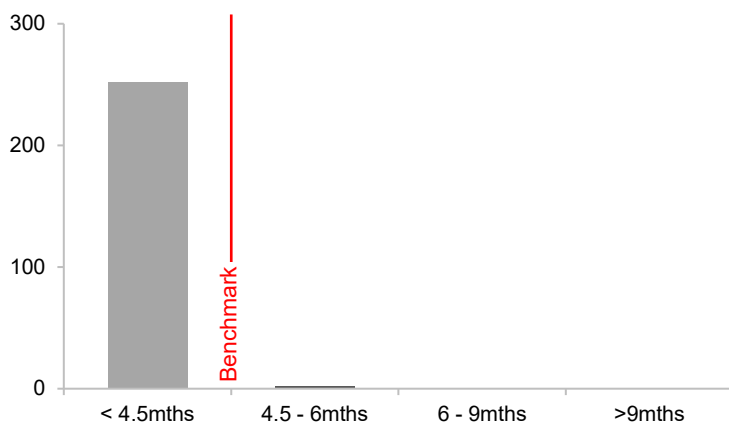
● Substantially comparable ● Partially comparable ● Not comparable

### Recommended for specialist recognition

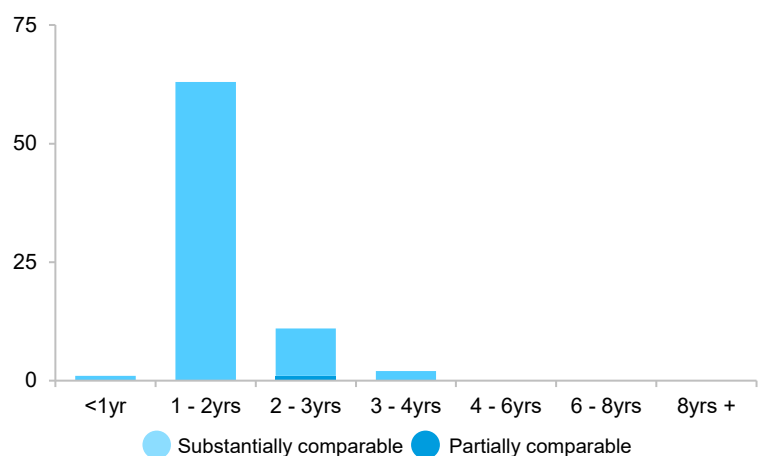


● Recommended ● Not recommended

### SIMGs starting in 2023: Time for interim assessment

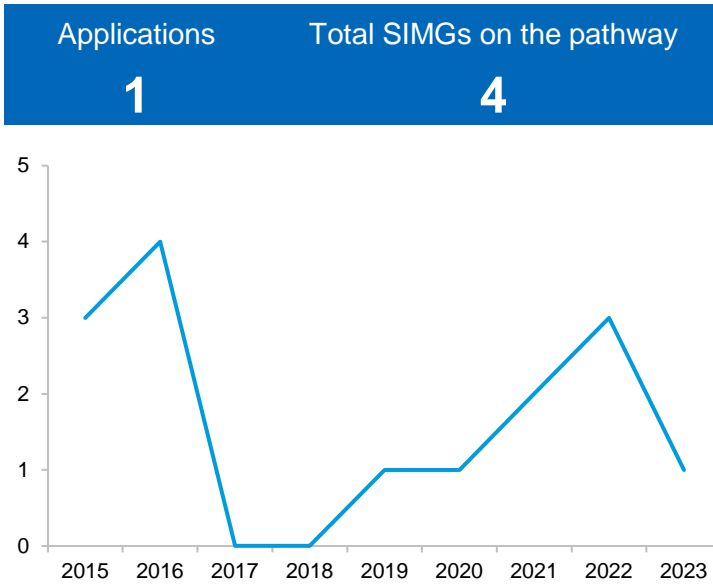


### SIMGs finishing in 2023: Total time on pathway

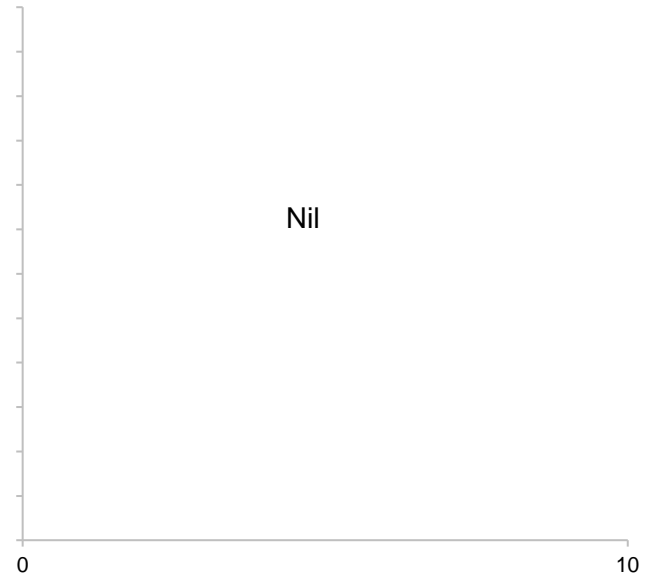


● Substantially comparable ● Partially comparable

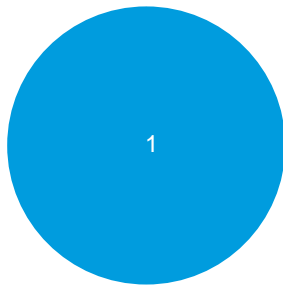
### Number of applications



### Country of specialist qualification

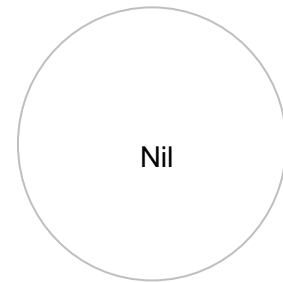


### Interim assessment outcome



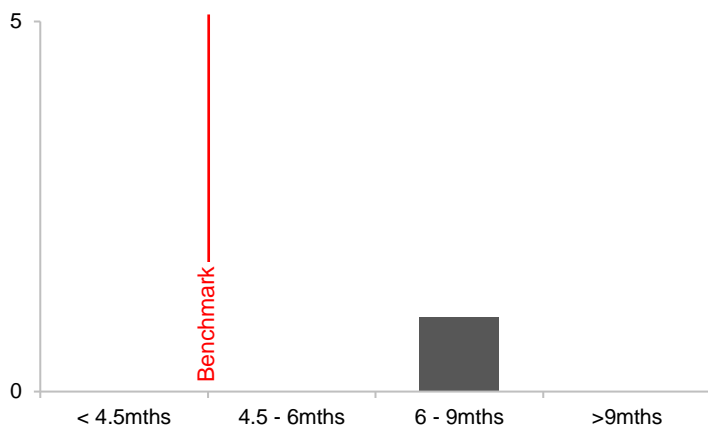
● Substantially comparable 
 ● Partially comparable 
 ● Not comparable

### Recommended for specialist recognition

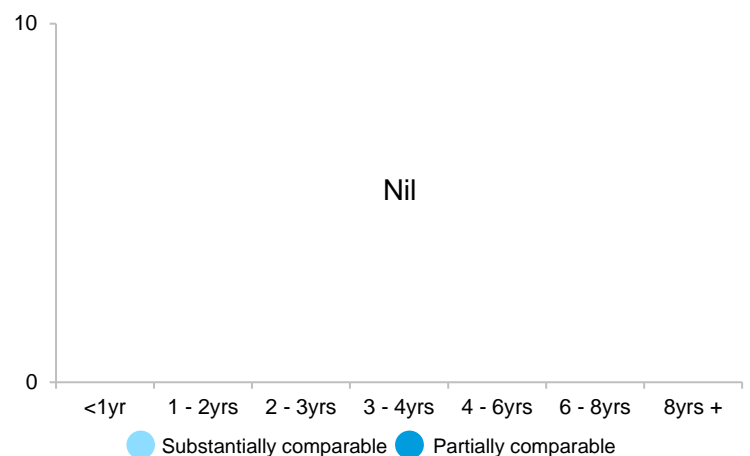


● Recommended 
 ● Not recommended

### SIMGs starting in 2023: Time for interim assessment

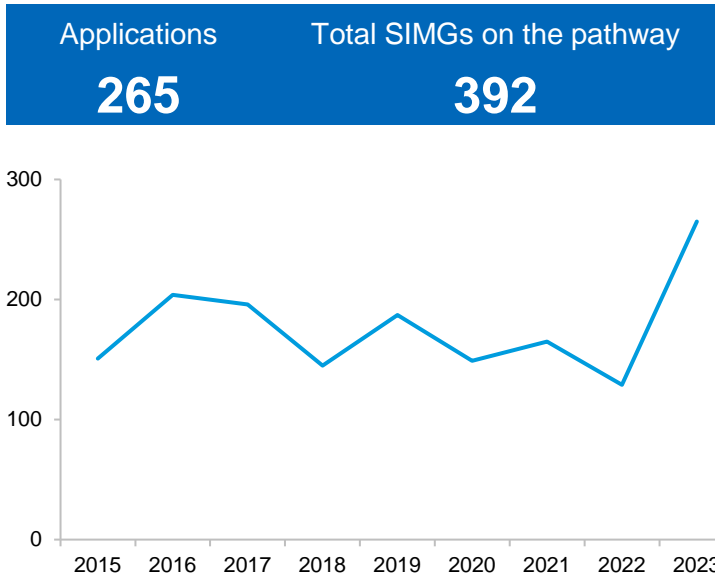


### SIMGs finishing in 2023: Total time on pathway

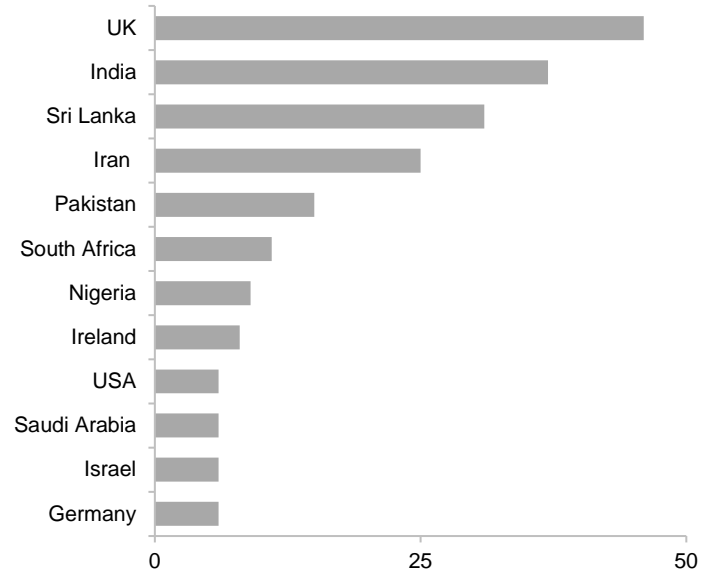


● Substantially comparable 
 ● Partially comparable

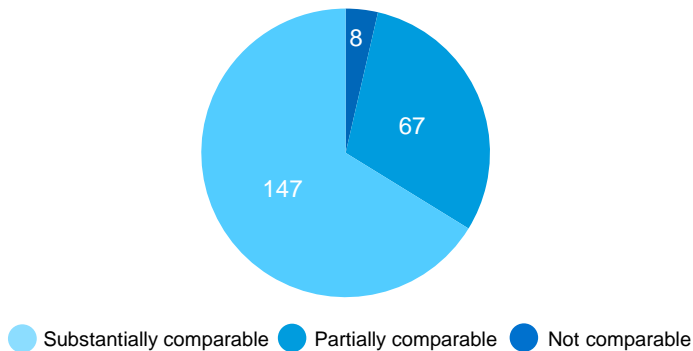
### Number of applications



### Country of specialist qualification (top 12)



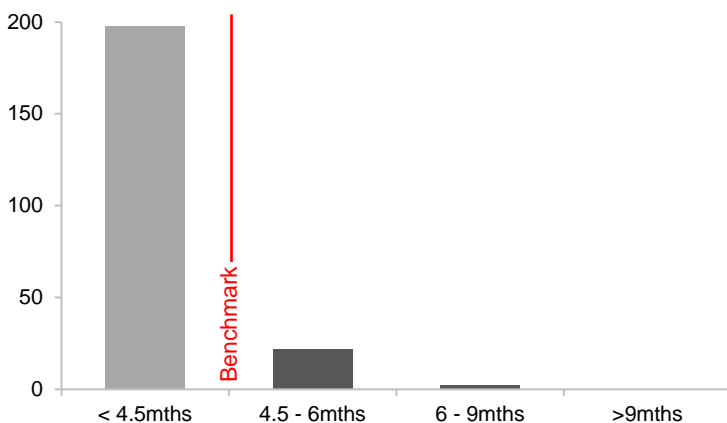
### Interim assessment outcome



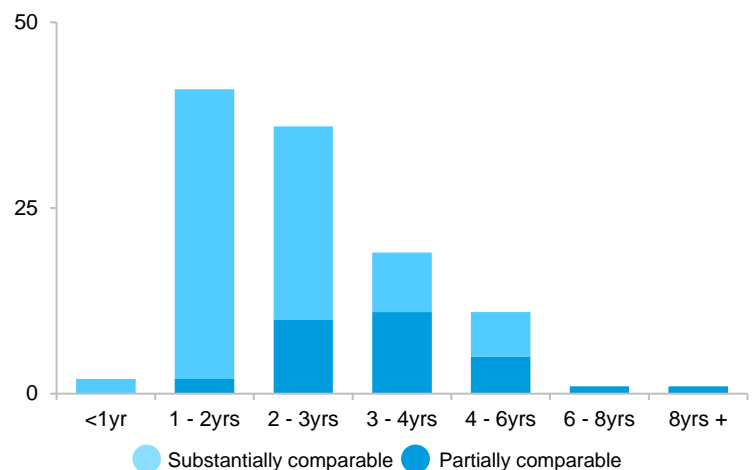
### Recommended for specialist recognition



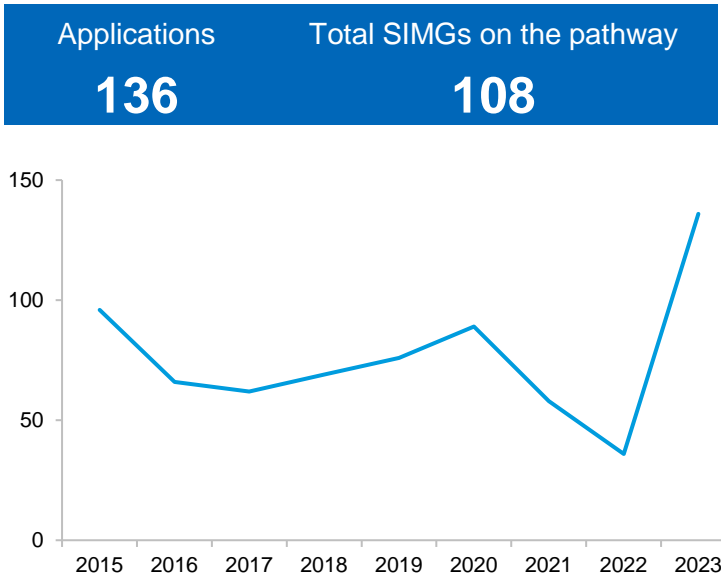
### SIMGs starting in 2023: Time for interim assessment



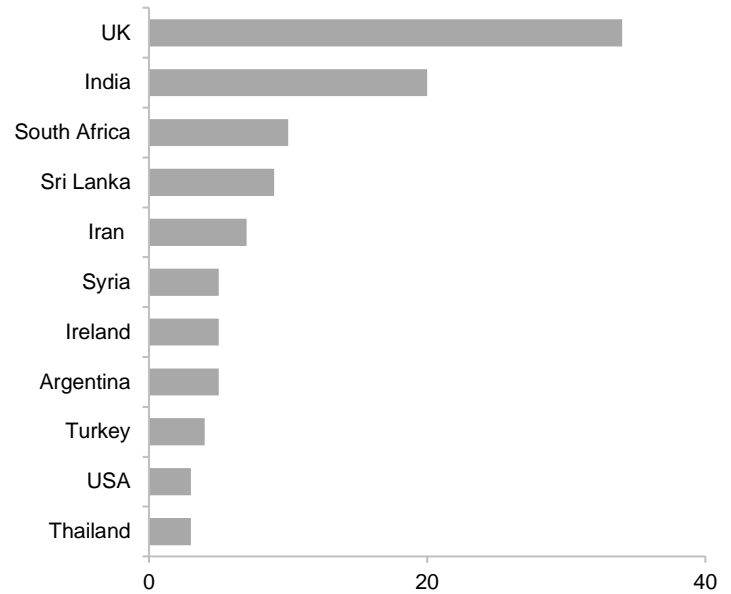
### SIMGs finishing in 2023: Total time on pathway



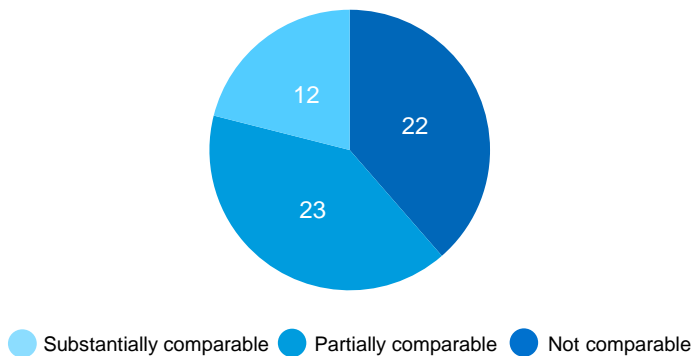
### Number of applications



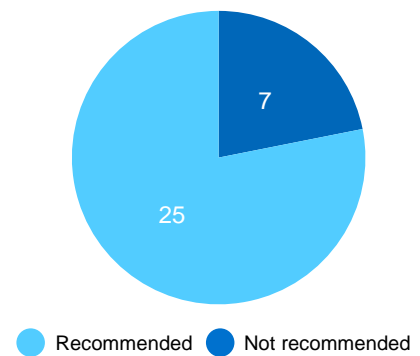
### Country of specialist qualification (top 11)



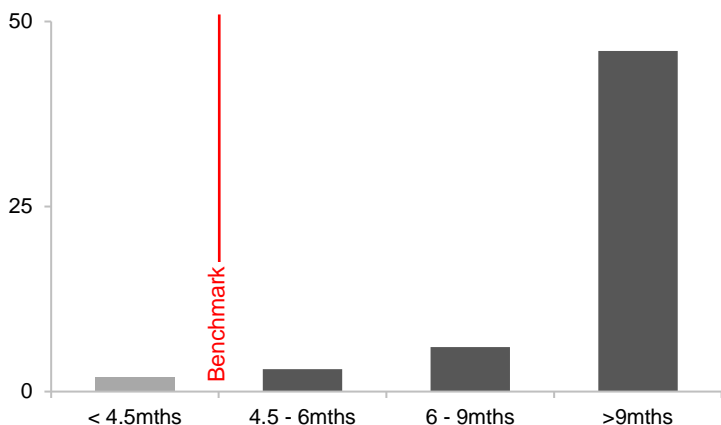
### Interim assessment outcome



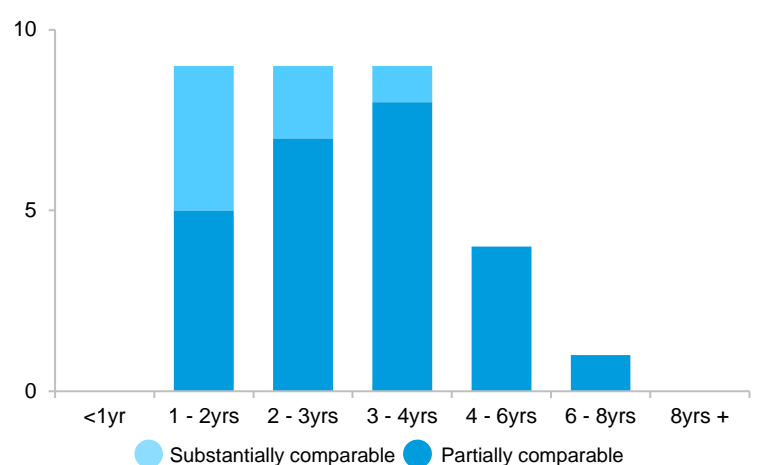
### Recommended for specialist recognition



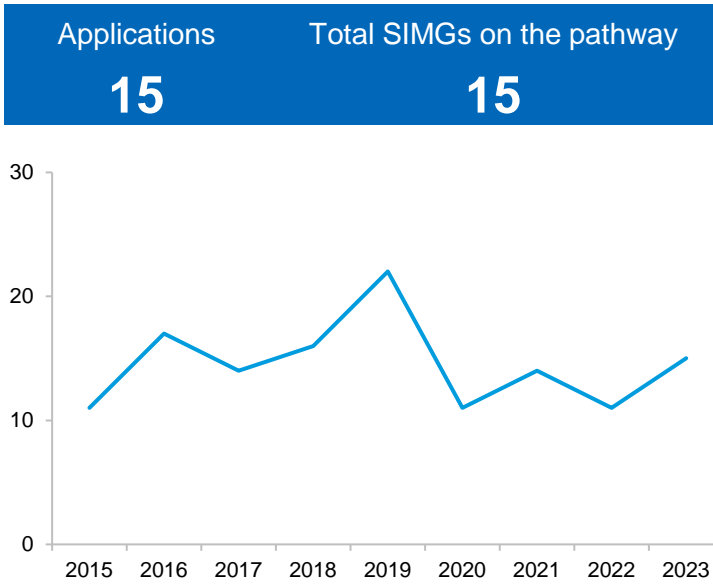
### SIMGs starting in 2023: Time for interim assessment



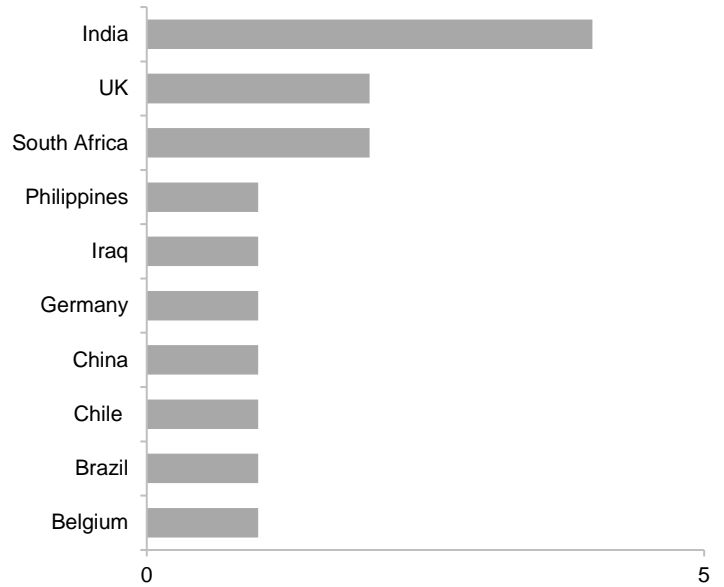
### SIMGs finishing in 2023: Total time on pathway



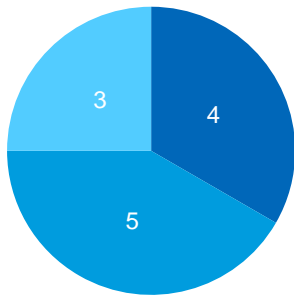
### Number of applications



### Country of specialist qualification (top 10)

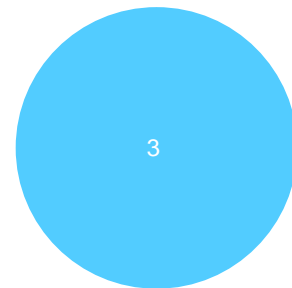


### Interim assessment outcome



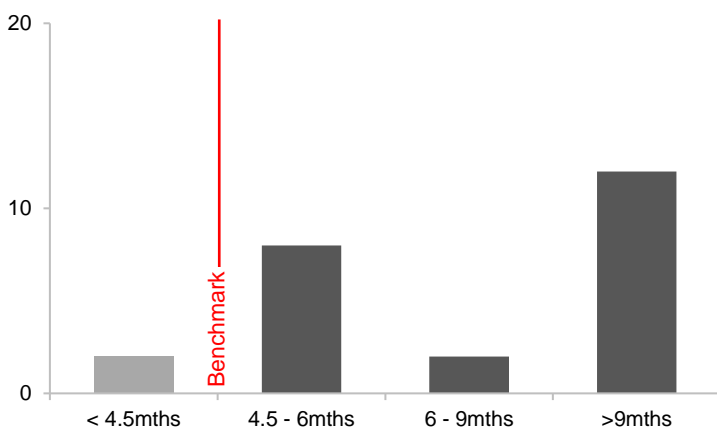
● Substantially comparable ● Partially comparable ● Not comparable

### Recommended for specialist recognition

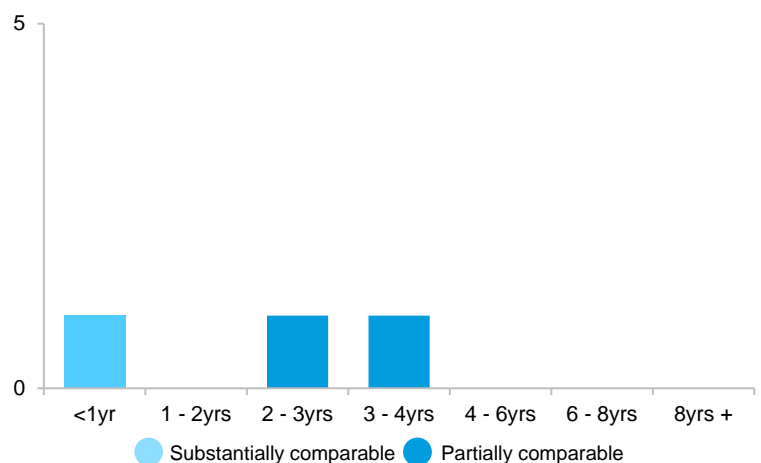


● Recommended ● Not recommended

### SIMGs starting in 2023: Time for interim assessment

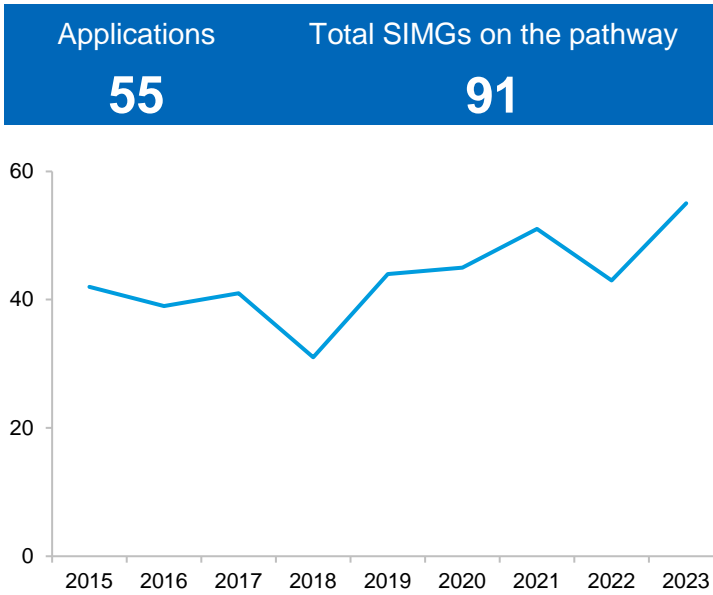


### SIMGs finishing in 2023: Total time on pathway

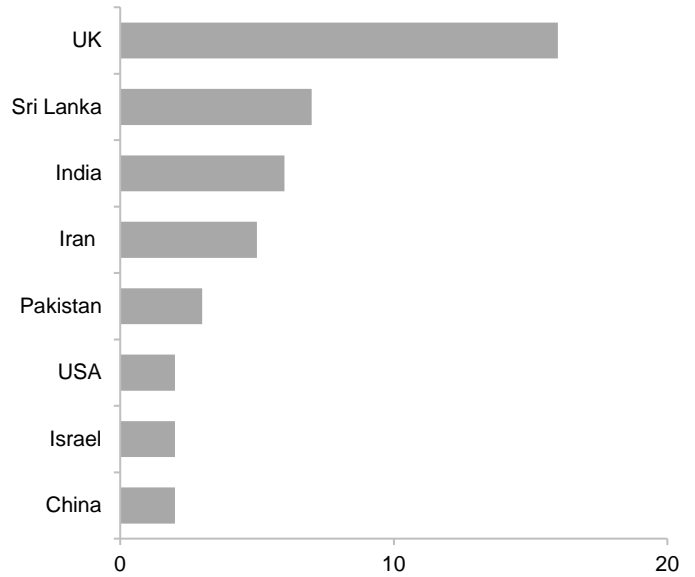


● Substantially comparable ● Partially comparable

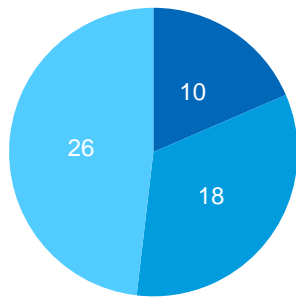
### Number of applications



### Country of specialist qualification (top 8)

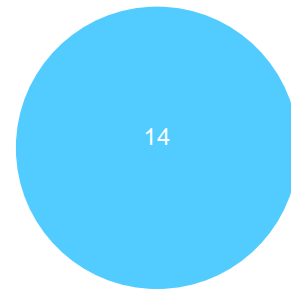


### Interim assessment outcome



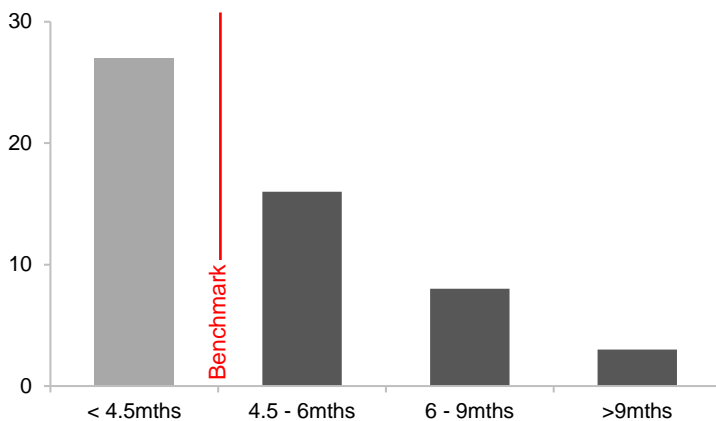
● Substantially comparable ● Partially comparable ● Not comparable

### Recommended for specialist recognition

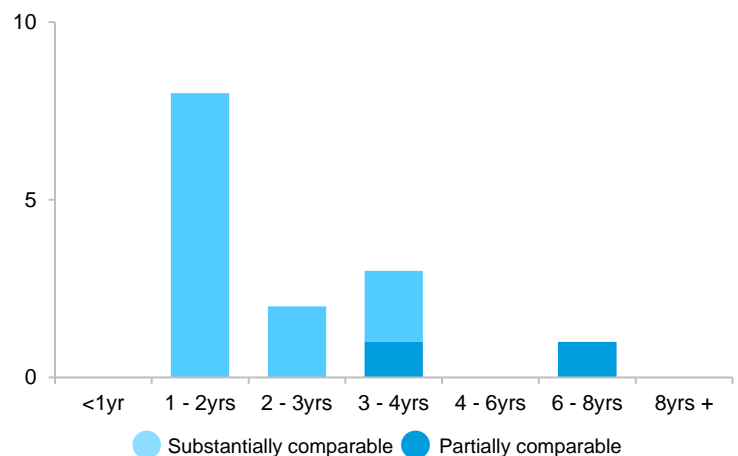


● Recommended ● Not recommended

### SIMGs starting in 2023: Time for interim assessment

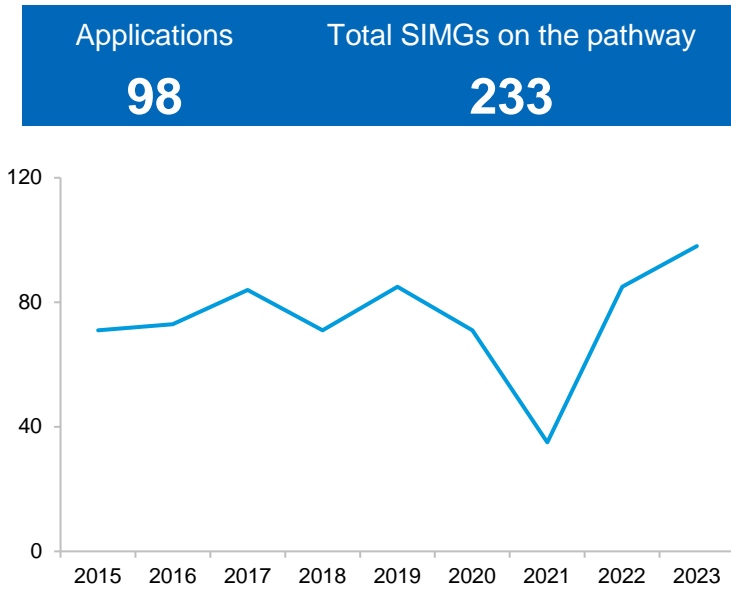


### SIMGs finishing in 2023: Total time on pathway

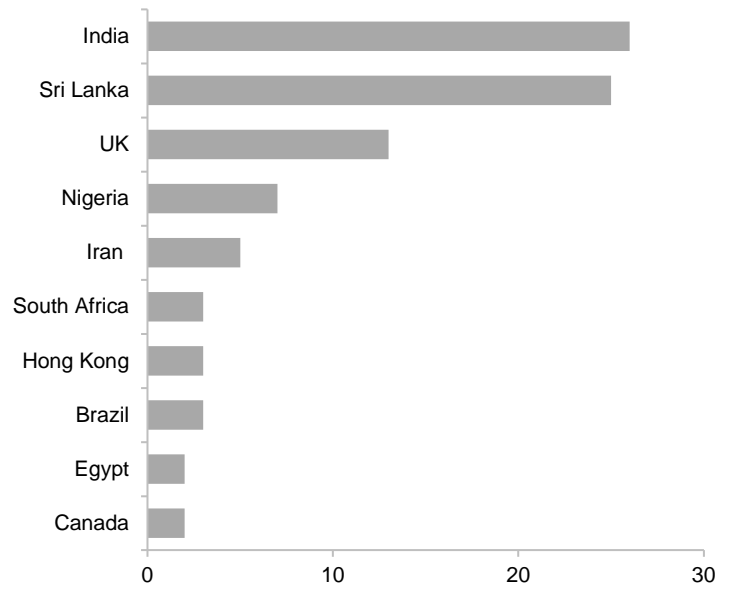


● Substantially comparable ● Partially comparable

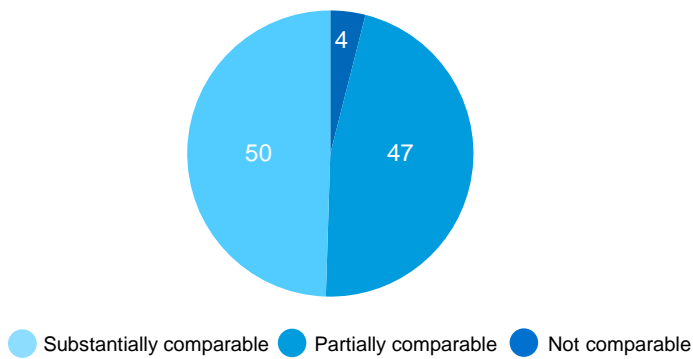
### Number of applications



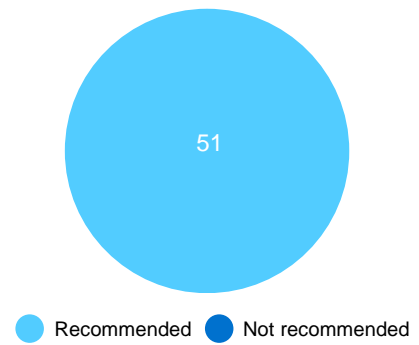
### Country of specialist qualification (top 10)



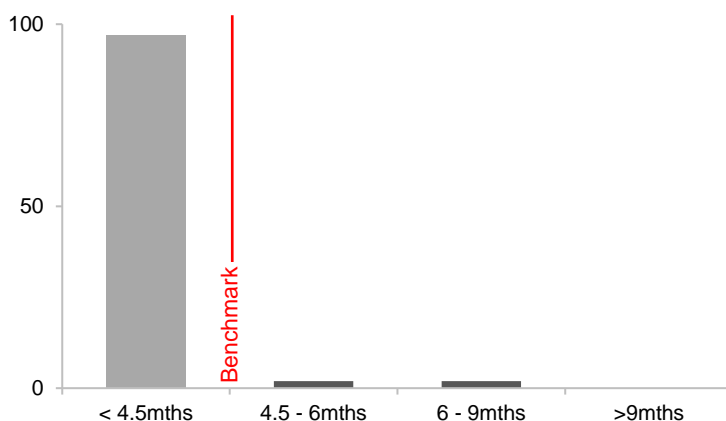
### Interim assessment outcome



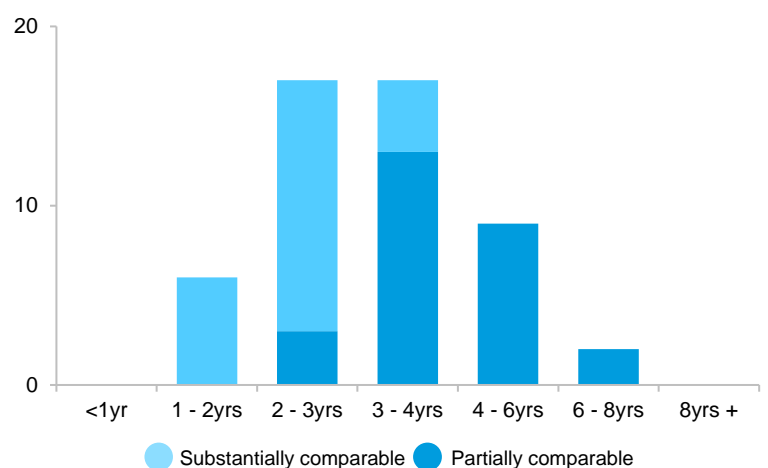
### Recommended for specialist recognition



### SIMGs starting in 2023: Time for interim assessment

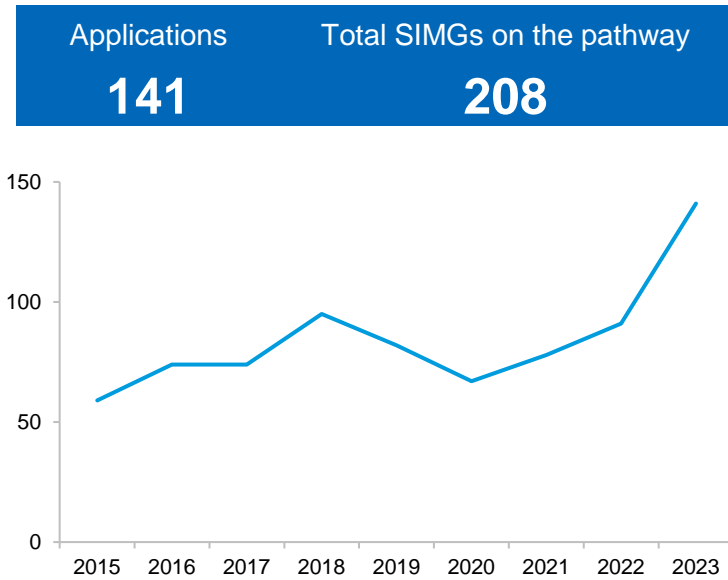


### SIMGs finishing in 2023: Total time on pathway

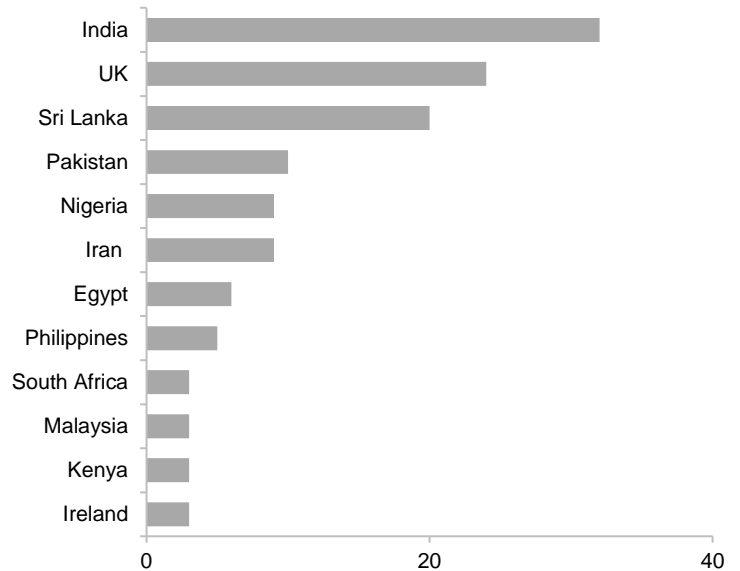




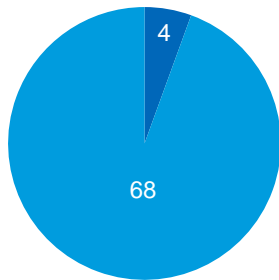
### Number of applications



### Country of specialist qualification (top 12)

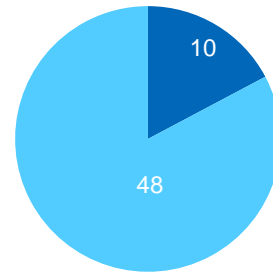


### Interim assessment outcome



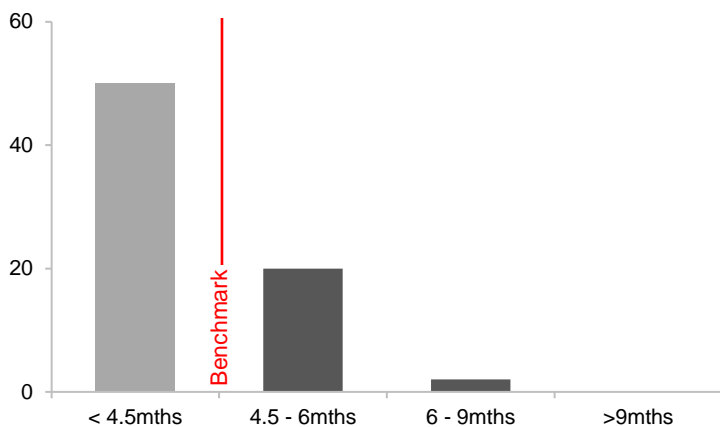
● Substantially comparable ● Partially comparable ● Not comparable

### Recommended for specialist recognition

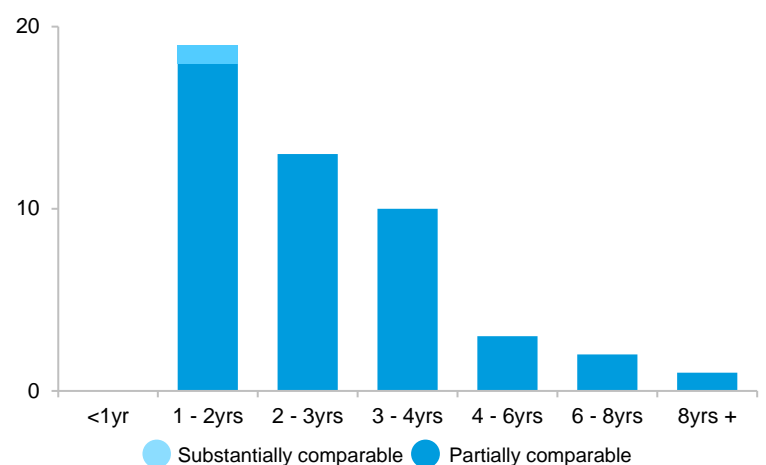


● Recommended ● Not recommended

### SIMGs starting in 2023: Time for interim assessment

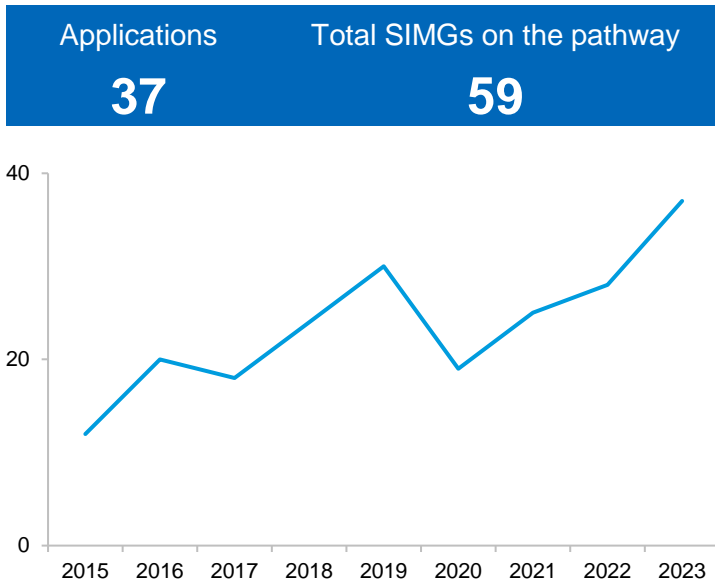


### SIMGs finishing in 2023: Total time on pathway

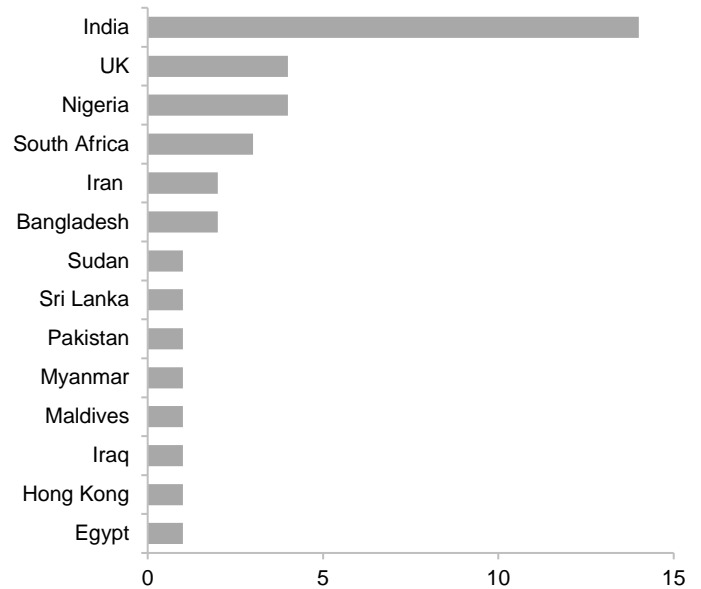


● Substantially comparable ● Partially comparable

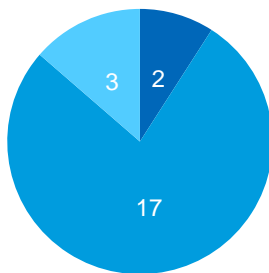
### Number of applications



### Country of specialist qualification (top 14)

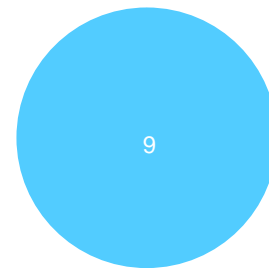


### Interim assessment outcome



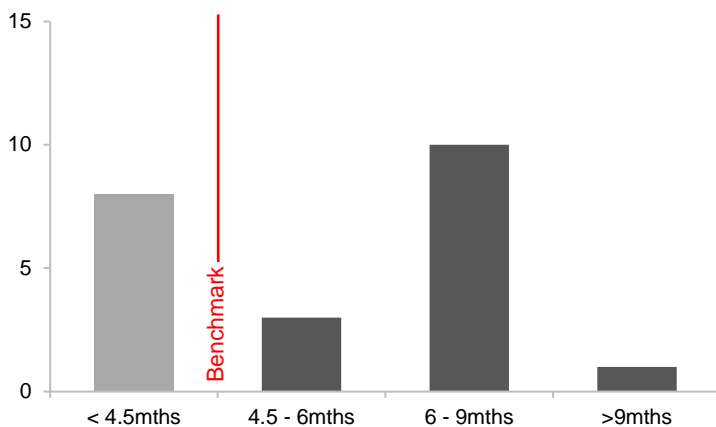
● Substantially comparable ● Partially comparable ● Not comparable

### Recommended for specialist recognition

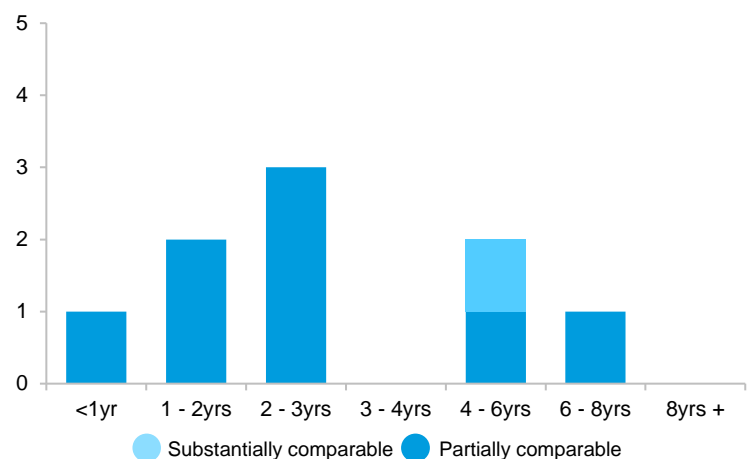


● Recommended ● Not recommended

### SIMGs starting in 2023: Time for interim assessment



### SIMGs finishing in 2023: Total time on pathway



● Substantially comparable ● Partially comparable