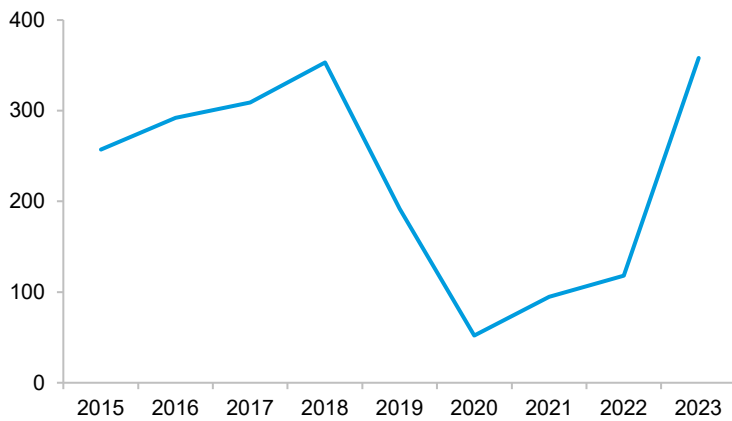
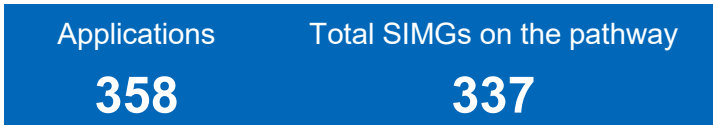
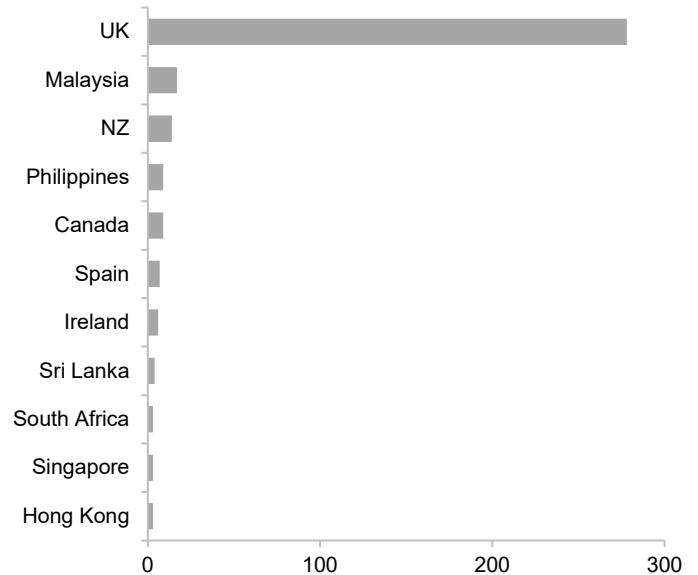


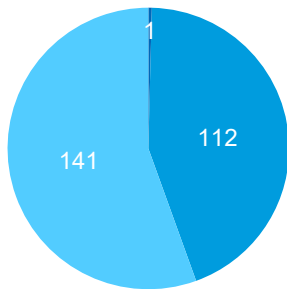
Number of applications



Country of specialist qualification (top 11)

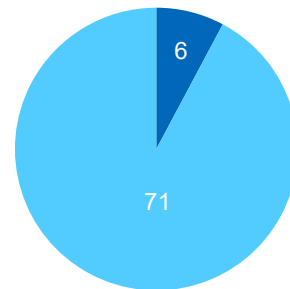


Interim assessment outcome



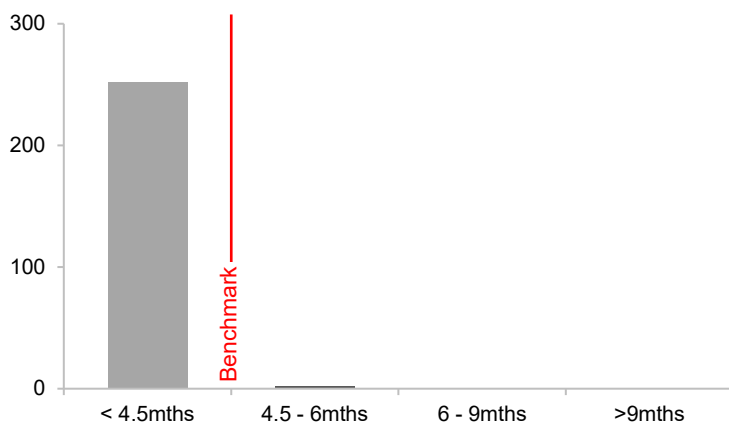
● Substantially comparable ● Partially comparable ● Not comparable

Recommended for specialist recognition

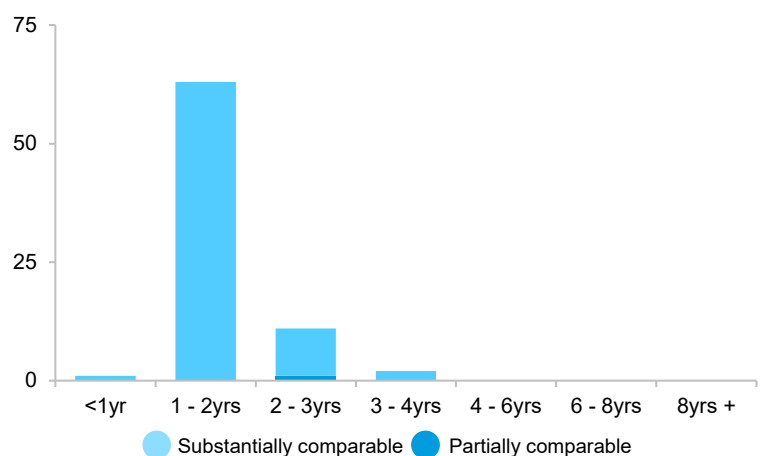


● Recommended ● Not recommended

SIMGs starting in 2023: Time for interim assessment



SIMGs finishing in 2023: Total time on pathway



● Substantially comparable ● Partially comparable