

Local decisions: National Scheme

Regulating health
practitioners in
Western Australia

WA

Annual Report Summary

2015/16

The Australian Health Practitioner
Regulation Agency and the National
Boards, reporting on the National
Registration and Accreditation Scheme



Aboriginal and Torres Strait Islander health practice	Occupational therapy
Chinese medicine	Optometry
Chiropractic	Osteopathy
Dental	Pharmacy
Medical	Physiotherapy
Medical radiation practice	Podiatry
Nursing and Midwifery	Psychology

Australian Health Practitioner Regulation Agency

This annual report summary is publicly available to download at www.ahpra.gov.au/annualreport.

ISSN: 2204-1265

ALLF1611 08

At a glance: regulating health practitioners in Western Australia in 2015/16

This annual report summary offers a snapshot of our work regulating more than 67,000 registered health practitioners in Western Australia (WA) for the financial year to 30 June 2016.

A more detailed national profile is published in the Australian Health Practitioner Regulation Agency (AHPRA) and the National Boards' 2015/16 annual report: www.ahpra.gov.au/annualreport/2016.

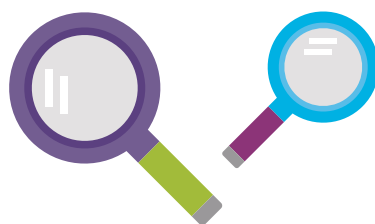


WA practitioners accounted for **10.2%** of all registered health practitioners in Australia

67,384 health practitioners were registered in WA in 2015/16, compared with 65,588 the previous year



6,643 new applications for registration were received in WA, a decrease of **0.8%** year on year



Women comprised **78%** of the registered WA health workforce



6,547 criminal history checks were carried out for applicants in WA. Of **459** disclosable court outcomes, **six** required regulatory action

16.7% of all Aboriginal and Torres Strait Islander health practitioners were based in WA

718 notifications were received about registrants with a principal place of practice in WA



3% of all osteopaths were based in WA



112 new statutory offence complaints were received, an increase of **166.7%** from the previous year

635 WA practitioners were monitored for health, performance and/or conduct during the year

The majority of these were medical practitioners (**242**) or nurses (**154**)

There was an **8.1%** decrease in notifications in WA, from 781 in 2014/15

7.1% of all notifications (complaints or concerns) received nationally during the year were about practitioners in WA



About the National Scheme

Who

The National Registration and Accreditation Scheme (the National Scheme) regulates almost 660,000 registered health practitioners across Australia.

The Australian Health Practitioner Regulation Agency (AHPRA) supports the 14 National Boards that are responsible for regulating the health professions. The primary role of the National Boards is to protect the public.

The 14 National Boards are:

- ▶ Aboriginal and Torres Strait Islander Health Practice Board of Australia
- ▶ Chinese Medicine Board of Australia
- ▶ Chiropractic Board of Australia
- ▶ Dental Board of Australia
- ▶ Medical Board of Australia
- ▶ Medical Radiation Practice Board of Australia
- ▶ Nursing and Midwifery Board of Australia
- ▶ Occupational Therapy Board of Australia
- ▶ Optometry Board of Australia
- ▶ Osteopathy Board of Australia
- ▶ Pharmacy Board of Australia
- ▶ Physiotherapy Board of Australia
- ▶ Podiatry Board of Australia
- ▶ Psychology Board of Australia

The National Scheme makes sure that only practitioners who have the skills and qualifications to provide safe and ethical care are registered to practise in Australia.

What

The National Boards set professional standards that all registered health practitioners must meet. The Boards hold practitioners to account against these standards when they respond to complaints about practitioners.

Registered health practitioners can register once and practise across Australia within the scope of their registration, creating a more flexible and sustainable health workforce.

The online national registers provide a one-stop shop for the community about the current registration status of all registered health practitioners in Australia, including current restrictions on practice.

Agreed regulatory principles underpin the work of the National Boards and AHPRA in regulating Australia's health practitioners in the public interest. The National Scheme is responsible for the quality education of health practitioners, by setting a standardised framework for the accreditation of health practitioner education and training in Australia.

The searchable database for the registers of practitioners (also known as the public register) can be found at: www.ahpra.gov.au/registration/registers-of-practitioners.

When

The National Scheme started in July 2010. Since then, there has been an increase in the number of registered practitioners, from 530,115 in June 2011 to 657,621 on 30 June 2016.

Where

The National Scheme operates across Australia with local offices in each capital city. It builds local decision-making into a national standards and policy framework. Every state and territory parliament has passed a national law – the Health Practitioner Regulation National Law, as in force in each state and territory (the National Law), which came into effect on 1 July 2010 (and 18 October 2010 in Western Australia).

Why

Public safety is the core focus of regulation. Other objectives and guiding principles of the National Scheme are set down in the National Law.

For more information on the National Law, see www.ahpra.gov.au/About-AHPRA/What-We-Do/Legislation.

Contents

At a glance: regulating health practitioners in Western Australia	1	Table 7: Applications received, by profession and registration type	22
About the National Scheme	2	Table 8: Outcome of applications for registration finalised in 2015/16	23
Foreword from the AHPRA Chair and CEO	4	Criminal history checks	
Foreword from WA State Manager, Robyn Collins	5	Table 9: Domestic and international criminal history checks in WA and nationally, by profession	24
Part 1: Decision-making in WA: Board and committee reports	7	Table 10: Cases in 2015/16 where a criminal history check resulted in, or contributed to, imposition of conditions or undertakings, by profession	25
WA Registration and Notification Committee, Dental Board of Australia	8	Notifications in WA	
WA Board of the Medical Board of Australia	9	Table 11: Notifications received or closed in 2015/16 or remaining open at 30 June 2016, by profession	27
WA Board of the Nursing and Midwifery Board of Australia	10	Table 12: Percentage of registrant base with notifications received in 2015/16, by profession	28
Pharmacy Board of Australia: Chair's message	11	Table 13: Registrants involved in mandatory notifications, by jurisdiction	28
NT, SA and WA Regional Board of the Psychology Board of Australia	12	Table 14: Issues in notifications received in 2015/16	28
National Boards and committees: making local decisions	13	Table 15: Source of notifications received in 2015/16	29
Part 2: The National Scheme at work in WA: data snapshot	14	Table 16: Immediate action cases about notifications received in 2015/16	29
Background	15	Table 17: Notifications under previous legislation open at 30 June 2016, by profession (excluding HPCA)	29
Registration in WA	15	Table 18: Outcome of enquiries received in 2015/16 (excluding HPCA)	30
Criminal history checks	25	Table 19: Outcome of assessments finalised in 2015/16 (excluding HPCA)	30
Notifications in WA	26	Table 20: Outcome of investigations finalised in 2015/16 (excluding HPCA)	30
Monitoring and compliance	32	Table 21: Outcome of panel hearings finalised in 2015/16 (excluding HPCA)	31
Statutory offence complaints	33	Table 22: Outcome of tribunal hearings finalised in 2015/16 (excluding HPCA)	31
		Table 23: Notifications closed in 2015/16, by profession and stage at closure in WA	31
List of tables		Monitoring and compliance	
Registration in WA		Table 24: Active monitoring cases at 30 June 2016, by profession (excluding HPCA)	32
Table 1: Registered practitioners with WA as the principal place of practice, by profession	16	Table 25: Active monitoring cases at 30 June 2016 in WA and nationally, by stream	32
Table 2: Registered practitioners with WA as the principal place of practice, by registration type	16	Statutory offence complaints	
Table 3: Registered practitioners who hold an endorsement or notation with WA as the principal place of practice	18	Table 26: Offences received and closed by profession and jurisdiction	33
Table 4: Registered practitioners with WA as the principal place of practice, by profession and gender	18		
Table 5: Registered Chinese medicine, dental and medical radiation practitioners, and nurses and midwives with WA as the principal place of practice, by division	19		
Table 6: Health practitioners with specialties at 30 June 2016	20		

Foreword from the AHPRA Chair and CEO

The regulation of almost 660,000 registered health practitioners across 14 health professions and a federation of eight states and territories is a large and important task.

AHPRA and the National Boards rely on the local knowledge and expertise of boards, committees and our offices in each state and territory to protect the public Australia-wide. Our number one priority is patient safety while enabling a competent and flexible health workforce to meet the current and future health needs of the community.

Western Australia (WA) has 67,384 registered health practitioners. This represents 10.2% of all Australian practitioners, a growth of 2.7% from last year.

This year, the WA office continued its work to improve the notification process with a particular focus on new notifications that pose a potential risk to the public and warrant immediate attention.

Another area of focus has been on continuing to build relationships. The WA office participated in more than 170 external stakeholder activities, engaging approximately 50 different organisations about registration standards, notification processes and other issues related to the National Scheme.

The WA office works collaboratively with the NSW office to efficiently process complex registration applications from practitioners with an international nursing or midwifery qualification. Collectively, we assessed more than 3,450 applications in 2015/16, reducing assessment time by half.

In partnership with local state boards and committees, the WA office ensures timely and effective regulatory decision-making. This is consistent with our shared regulatory principles and our commitment to being a risk-based regulator.

We thank the staff of the WA office, boards and committee members for their hard work and commitment over the past year. While much has been achieved, there is always more to do. We look forward to continuing to work with them to serve the WA community.



Mr Martin Fletcher
Chief Executive
Officer, AHPRA



Mr Michael Gorton AM
Chair, Agency
Management Committee

Foreword from WA State Manager, Robyn Collins

It has been a year of significant achievement and action in the WA AHPRA office. In partnership with the National Boards, the WA AHPRA office regulates 67,384 registered practitioners – 10.2% of all registered practitioners nationally and an increase of 1,796 from the last year.

Highlights of 2015/16

- ▶ **Efficient handling of complaints:** We intensified our focus on responding to new notifications that involve a potential risk to the public and therefore warrant immediate attention.
- ▶ **Increased collaboration:** The WA office, with National Board and AHPRA representatives and health complaints commissioners from WA, the Northern Territory, South Australia, Tasmania and Victoria, participated in a pilot project to improve how notifications are managed nationally.
- ▶ **WA registrants with notifications lower than national average:** WA was one of only three jurisdictions in Australia where notifications decreased in 2015/16 (from 781 in 2014/15 to 718), with 1.2% of WA practitioners the subject of complaints.

Working in partnership with National Boards

The WA office directly supports the four state or regional boards or committees of the National Boards who make decisions about individual practitioners locally in WA or regionally. We also develop the papers for local matters considered by the remaining ten professions with national committees. This year, the WA office received 6,643 new applications for registration and 718 notifications about health practitioners.

Building stakeholder relationships

In 2015/16, AHPRA WA participated in 175 external stakeholder activities, engaging with approximately 50 different organisations about registration standards, notification processes and other issues related to the National Scheme. These stakeholders included the Health Consumers Council WA, the Health and Disability Services Complaints Office

(HaDSCO), public and private hospitals, universities and other health education providers, and government and non-government health agencies. One of these events was a graduation ceremony for Indigenous enrolled nurses studying with Marr Mooditj Training, which we were invited to attend to answer questions from new graduates.

The WA office continued to work closely with HaDSCO (the local health complaints entity) to support a national working group established to implement a number of improvements promoting greater consistency and collaboration, including better communication with complainants and with each other to support joint consideration of complaints. The working group also initiated an information campaign about the roles and responsibilities of AHPRA, the National Boards and health complaints entities (HCEs), including producing a brochure for the public on the most suitable organisation through which to direct a complaint.

Managing risk through local decision-making

The mechanisms for managing risk are consistent in each state and territory under the National Scheme, and may include some or all of the following: immediate action; imposing restriction; accepting undertakings; suspension or cancellation of registration; ongoing compliance monitoring of practitioners; and/or audits.

Boards may also refuse or impose conditions on registration while making decisions on registration applications.

On 76 occasions, the registration of a WA-based practitioner was suspended or restricted as an outcome of the Board taking immediate action to protect public health or safety. This year, 36 notifications were closed after a hearing by the State Administrative Tribunal.

Local office, national contribution

Registration teams from the WA and New South Wales offices combined efforts to efficiently process complex registration applications from practitioners with an international nursing or midwifery qualification. Collectively, more than 3,450 applications have been assessed, reducing the previous processing time by half.

AHPRA works closely with the Occupational Therapy Council (Australia & New Zealand) Ltd in dealing with applications from overseas qualified occupational therapists; all applications received at AHPRA offices across the country continue to be reviewed and processed in the WA office.

WA continues to host quality assurance as a national function. This is a great example of local contribution to the National Scheme, as we harness specialist skills in key areas in WA and apply them nationally. The WA-based manager of quality assurance supports the governing national committee to implement national quality assurance activities in core business areas.

Late this year, I was made cluster lead with accountability for the Adelaide, Darwin and Perth offices, in collaboration with the State and Territory Managers in those jurisdictions. The desired

outcome of cross-jurisdiction work is to continue to improve efficiency, consistency and overall performance, and I look forward to meeting this challenge with the cooperation of the team.

I would like to take this opportunity to thank the members of the WA and regional boards and committees for their diligence, expertise and commitment to the community of WA.

I would also like to extend my sincere gratitude and thanks to the hardworking team in the WA office for their continued dedication, professionalism and commitment to regulation excellence.



**Adjunct Associate
Professor Robyn Collins**
WA State Manager,
AHPRA



Part 1:
Decision-making in WA:
Board and committee reports

WA Registration and Notification Committee, Dental Board of Australia: Chair's message

The WA Registration and Notification Committee of the Dental Board of Australia has continued in 2015/16 to work to meet the objectives of the National Scheme in managing risk to patients.

We make decisions about individual registered dentists after receiving a notification (complaint) about them; and assess the most complex applications for registration, often from overseas-trained practitioners.

The WA Committee is made up of practitioner and community members from WA. The decisions of the committee are guided by the national standards and policies set by the Dental Board of Australia.

This year, the WA Committee spent time working with the Dental Board of Australia and AHPRA to further improve the experience of notifiers and practitioners. We worked on evolving and streamlining processes to further improve customer service, and to ensure clarity about what people can expect.

We have endeavoured to engage with our stakeholders during the year, including representatives of the WA branch of the Australian Dental Association and the Health and Disability Services Complaints Office to discuss issues that are common to our work.

The WA Committee has dealt with a broad range of increasingly complex notifications. I thank my colleagues for their diligence to the people of WA, ensuring that the WA Committee meetings are conducted professionally, efficiently and effectively.

I wish to thank AHPRA staff for their efforts, professionalism and support. I thank the Dental Board of Australia for the opportunity to serve the WA community in this work, and in particular the Chair, Dr John Lockwood for his ongoing support.

This WA report provides a snapshot of regulation at work in our state over the past year. It complements the comprehensive, profession-specific information published in the annual report of AHPRA and the National Boards for 2015/16.



Dr Gerard Parkinson
Chair, WA Registration
and Notification
Committee, Dental
Board of Australia



Dr John Lockwood AM
Chair, Dental Board
of Australia

Members of the WA Committee in 2015/16

Dr Gerard Parkinson (Chair)

Dr Susan Anderson

Ms Bronwyn Davies

Mr Graham Devenish

Mr Michael Piu

Dr Simon Shanahan

WA Board of the Medical Board of Australia: Chair's message

As in previous years, the focus of the WA Board of the Medical Board of Australia in 2015/16 has been on public safety as we made decisions about individual medical practitioners.

Our decisions fall into two broad categories: complex applications for registration that require detailed individual assessment; or deciding what action is required to manage risk to the public as a result of a notification.

We are a local board making decisions about local practitioners. We are guided by the national standards and policies set by the Medical Board of Australia, and are supported by the local AHPRA office.

The WA Board has spent time this year working with the Medical Board nationally, with all other state and territory Medical Boards and AHPRA, to further improve the experience of notifiers and practitioners. The overall goal is to improve our customer service, be clear about what people can expect and make it easier for people to interact with us.

The WA Board has taken a proactive role in engaging and working with stakeholders in WA. We have invited representatives from the Health and Disability Services Complaints Office, the Postgraduate Medical Council and WA Medical Workforce team to our Board and committee meetings throughout the year, to discuss issues that are common to our work.

This year, we say a special thanks to outgoing members Ms Prudence Ford, Dr Frank Kubicek and Dr Steven Patchett for their contributions to the WA Board over the years. Subsequently, we welcome Dr Daniel Heredia and Dr Mark Edwards as Practitioner Members and Mr John Pintabona as a Community Member Representative to the WA Board. Our Board members contribute their time, energy and passion to protecting the public. Their vigilance ensures that community confidence in the system is retained.

I thank my colleagues on the WA Board for their energy and commitment to the people of WA during the year.

This WA report provides a snapshot of regulation-at-work in our state over the last year. It complements the comprehensive, profession-specific information published in the annual report of AHPRA and the National Boards for 2015/16.



**Professor
Con Michael AO**
Chair, WA Board,
Medical Board
of Australia



Dr Joanna Flynn AM
Chair, Medical Board
of Australia

Members of the WA Board in 2015/16

Professor Con Michael AO (Chair)
Ms Nicoletta Ciffolilli
Dr Mark Edwards (from 29 May 2016)
Ms Prudence Ford (until 30 September 2015)
Dr Daniel Heredia (from 18 October 2015)
Dr Frank Kubicek (until 17 October 2015)
Dr Michael Levitt
Dr Michael McComish
Professor Mark McKenna
Professor Stephan Millett
Dr Steven Patchett
Mr John Pintabona (from 1 January 2016)
Ms Virginia Rivalland
Professor Bryant Stokes AM
Adjunct Professor Peter Wallace OAM

WA Board of the Nursing and Midwifery Board of Australia: Chair's message

In 2015/2016, the WA Board of the Nursing and Midwifery Board of Australia continued to focus on public safety, making decisions about individual nurses and midwives.

Our decisions may be about complex applications for registration that require detailed individual assessment, health issues relating to a practitioner or deciding to take action to manage any risk to the public as a result of a notification to AHPRA that raises concerns about a practitioner's practice.

The decisions we make in WA are guided by the national standards and policies set by the Nursing and Midwifery Board of Australia (National Board). These policies and regulatory guidelines inform the decisions we make in WA about local practitioners, supported by AHPRA's WA office.

During the year, the WA Board has worked closely with our colleagues on the National Board and on other state and territory boards. This partnership supports a nationally consistent approach to managing and making decisions about notifications and registration matters for nurses and midwives.

The WA Board regularly met with representatives from other agencies, such as the director of the Health and Disability Services Complaints Office and the WA Chief Nursing and Midwifery Officer. This provides an opportunity for an exchange of information regarding the regulatory processes of AHPRA and identification of common areas of concern relating to the nursing and midwifery workforce.

WA Board members and WA AHPRA staff took the opportunity to attend a number of practitioner sites in the public and private sectors over the year. This allowed a better understanding of the context of a practitioner's area of practice, to help inform the Board's decision-making when considering the application of any conditions imposed on an individual's registration. The full WA Board also participated in professional development that concentrated on 'good decision-making'.

I wish to acknowledge the high level of work that AHPRA staff members continue to provide to the WA Board in preparation for our meetings. Their input is invaluable to assist our decision-making.

This year we say a special thanks to outgoing members Ms Virginia Seymour and Ms Jennifer Wood for their contributions to the WA Board



Ms Marie-Louise Macdonald
Chair, WA Board of the Nursing and Midwifery Board of Australia



Associate Professor Lynette Cusack
Chair, Nursing and Midwifery Board of Australia

over the years. Subsequently, we welcome Ms Mary Miller as a Practitioner Member. Our Board members contribute their time, energy and passion to protecting the public and their vigilance ensures that community confidence in the system is retained.

This snapshot of regulation-at-work in our state complements the comprehensive, profession-specific information published in the annual report of AHPRA and the National Boards for 2015/16.

Members of the WA Board in 2015/16

Ms Marie-Louise Macdonald (Chair)
Mrs Marie Baxter
Associate Professor Karen Clark-Burg
Dr Margaret Crowley
Adjunct Associate Professor Karen Gullick
Ms Pamela Lewis
Ms Mary Miller (from 26 April 2016)
Mr Michael Piu
Ms Virginia Seymour (until 16 February 2016)
Ms Jennifer Wood (until 25 April 2016)

Pharmacy Board of Australia: Chair's message

The Pharmacy Board of Australia (the National Board) makes decisions about registered pharmacists in WA. Regulation of pharmacists at a state and territory level is guided by the standards and policies set by the National Board.

Practitioner representation from each of the states and territories on the National Board helps to ensure consistency and transparency in the Board's work to implement the National Scheme at a local level. This is supported by a public perspective, which comes from community member representatives from four states. Mrs Rachel Carr is the practitioner member from WA on the National Board.

To ensure local knowledge informs nationally consistent decisions, the National Board has a notifications committee to make decisions about individual registered pharmacists in WA. In addition to five core members from the National Board, there are two representatives from each state and territory on this committee.

The representatives (jurisdictional members) from WA on the notifications committee are:

- ▶ Ms Barbara Kirk, and
- ▶ Ms Anne Chew.

Input throughout the year from stakeholders in Western Australia has been important in helping the Board to complete significant work.

The Board consulted widely before publishing revised registration standards on:

- ▶ professional indemnity insurance arrangements
- ▶ continuing professional development and related guidelines
- ▶ recency of practice
- ▶ supervised practice arrangements, and
- ▶ examinations for eligibility for general registration.

Feedback received after the publication of the Board's *Guidelines on compounding of medicines* resulted in a further period of consultation with stakeholders in relation to the expiry of compounded parenteral medicines. The Board continues to work closely with technical experts, the Therapeutic Goods Administration and other stakeholders to finalise this guidance.



Mr William Kelly
Chair, Pharmacy
Board of Australia

The National Board also worked with an external service provider to create a revised training program for oral examiners. This drew on the skills and expertise of local pharmacists who support the Board through their participation as examiners for the national pharmacy examination.

Information for students and interns published on the National Board's website was reviewed and updated. New resources were also created, including PowerPoint presentations that explain the Board's requirements and can be used by local education providers.

Pharmacy professional officers support the Board in its engagement with stakeholders in WA, which includes speaking each year to final-year pharmacy students and intern training providers about the National Board's requirements for provisional registration and how to apply, the intern year and the national pharmacy examination.

This year they also spoke to local members of the Pharmaceutical Society of Australia about the Board's new continuing professional development requirements and appeared before the Clinical Senate of WA to outline AHPRA and the Board's roles in regulation.

NT, SA and WA Regional Board of the Psychology Board of Australia: Chair's message

The Regional Board of the Psychology Board of Australia serves communities in the Northern Territory (NT), South Australia (SA) and Western Australia (WA).

The work of the Psychology Board of Australia is detailed in the annual report of AHPRA and the National Boards, which provides a national snapshot of the work the Board does to regulate the psychology profession in Australia.

The Regional Board is the local face of psychology regulation in our region. Our board is made up of practitioner and community members from the NT, SA and WA. The decisions we make about psychologists in our region are guided by the national standards and policies set by the Psychology Board of Australia. Our Board is supported by AHPRA's office in WA, with assistance from teams in SA and the NT.

The main focus of the Regional Board has continued to be on public safety, as we made decisions about individual psychologists. Most of our work considered what action we needed to take to manage risk to the public as a result of a notification (complaint). Another priority was assessing complex applications for registration. Consistency has been ensured through regular teleconferences with the three other Regional Chairs and attendance at the National Registration and Accreditation Scheme (NRAS) combined meeting.

We have endeavoured to engage with our stakeholders during the year, including representatives of the Health and Disability Services Complaints Office and other health complaints entities in WA, SA and the NT, to discuss issues that are common to our work.

This year we say a special thanks to outgoing members Dr Shirley Grace and Mrs Janet Stephenson for their valued contributions. Subsequently, we welcome SA Practitioner Member Mr Colby Pearce and NT Practitioner Member Mr Chris Frank to the Board. I would like to thank all members of the Regional Board for their continued hard work and for their commitment to protecting the public by ensuring that psychologists in our region are suitably qualified and uphold the standards that are expected of the profession.



**Associate Professor
Jennifer Thornton**
Chair, Regional Board
of the Psychology
Board of Australia



**Professor
Brin Grenyer**
Chair, Psychology
Board of Australia

Members of the NT/SA/WA Regional Board in 2015/16

Dr Jennifer Thornton (Chair)

Ms Cathy Beaton

Ms Judith Dikstein

Emeritus Professor David Leach

Mr Colby Pearce

Mr Chris Frank (from 10 June 2016)

Dr Shirley Grace (until 25 March 2016)

Dr Neil McLean (from 17 October 2015)

Mr Theodore Sharp (from 17 October 2015)

Ms Claire Simmons (from 1 January 2016)

Ms Janet Stephenson (until 9 September 2015)

National Boards and committees: making local decisions

The remaining nine National Boards in the National Scheme have taken a different approach to decision-making about local practitioners, with national committees comprising state and territory representatives.

The committees were established to manage the risk profile, complexity and size of their professions. See the 'Meet the Chairs' panel below to find out which National Boards have national committees that oversee decision-making on a local level.

The committees are appointed by the National Boards on merit and include Board members in most cases. Additional members may be appointed to bring specific professional or jurisdictional expertise when needed. Committees are overseen by the National Boards, who support consistent and robust decision-making to keep the public safe.

Using national committees is an important way to cut the cost of regulation for these professions, while maintaining the benefits of scale and public protection provided by the National Scheme. National Boards also work closely with our network of AHPRA state and territory managers, so they can monitor and respond to any jurisdiction-specific issues for their professions.

Throughout 2015/16, National Boards engaged with local stakeholders in a range of ways, including:

- ▶ holding stakeholder forums in states and territories to meet local practitioners and community members, and to discuss important issues for health practitioner regulation
- ▶ responding to invitations to address professional and employer organisations, education providers and other interested groups
- ▶ participating in joint, cross-board consultations about common registration standards, codes, guidelines and policies, and
- ▶ sharing advice and feedback from the National Scheme Community Reference Group and Professions Reference Group.

For more information about the work of National Boards during the year, read the 2015/16 annual report of AHPRA and the National Boards, at: www.ahpra.gov.au/annualreport/2016.

Meet the Chairs



Ms Lisa Penrith
Presiding Member,
Aboriginal and Torres
Strait Islander Health
Practice Board of
Australia



Professor Charlie Xue
Chair, Chinese
Medicine Board of
Australia



Dr Wayne Minter AM
Chair, Chiropractic
Board of Australia



Mr Neil Hicks
Chair, Medical
Radiation Practice
Board of Australia



Ms Julie Brayshaw
Chair, Occupational
Therapy Board of
Australia



Mr Ian Bluntish
Chair, Optometry
Board of Australia



Dr Nikole Grbin
Chair, Osteopathy
Board of Australia



Dr Charles Flynn
Presiding Member,
Physiotherapy Board
of Australia



**Ms Catherine
Loughry**
Chair, Podiatry Board
of Australia



Part 2:
The National Scheme
at work in WA

WA: data snapshot

Five insights for 2015/16

- ▶ As of 30 June 2016, there were 67,384 registered health practitioners with a principal place of practice in WA.
- ▶ WA is the principal place of practice for 16.7% of all registered Aboriginal and Torres Strait Islander health practitioners in Australia.
- ▶ 6,643 new applications were received for registration in WA, a decrease of 0.8% from the previous year.
- ▶ Complaints about practitioners in WA decreased by 5.3% year on year, to 718 new notifications received.
- ▶ Of the 1,348 new statutory offence complaints received nationally, there were 112 made about practitioners in WA.

Background

Data in the WA jurisdiction summary are drawn from the 2015/16 annual report published by AHPRA and the National Boards. WA data have been extracted from national source data to highlight the work we have undertaken over the past year to keep the public safe. All data were correct as at 30 June 2016.

Throughout, national figures are also provided to show how WA compares with the national average. Where possible, we have included the previous year's data for comparison.

In the following pages, you will find registration data, such as the number of practitioners in each profession whose principal place of practice (PPP) is in WA, including a breakdown by registration type, registration division (for professions with divisions), information about specialities (for dental, medical and podiatry practitioners), and endorsements or notations held. A gender breakdown of practitioners by profession is also included.

Notifications data¹ (about complaints lodged) are also included, with details of notifications received and closed during the year, as well as those that remained open at the end of the reporting year. Details of mandatory reports received and

immediate actions taken are included, as well as information on the rate of notifications and mandatory notifications in the jurisdiction.

Information on statutory offence matters, tribunal and panel hearings, active monitoring cases and criminal history checks is also included.

To view the 2015/16 AHPRA annual report in full, along with national, profession-specific data and other state and territories' data, visit www.ahpra.gov.au/annualreport/2016.

In early 2017, each of the 14 national boards will publish a summary report outlining their profession's performance in 2015/16.

Registration in WA

Tables 1–8 provide details of registered health practitioners with a principal place of practice in WA. At 30 June 2016, the number of registered health practitioners in WA was 67,384, an increase of 1,796 (2.7%) from 2014/15. This jurisdiction represents 10.2% of all registered health practitioners in Australia.

At a profession level, the proportion of registrants in WA ranged from 16.7% of Aboriginal and Torres Strait Islander health practitioners to 3% of osteopaths nationally. See Table 1.

Data also showed that in 2015/16 WA had:

- ▶ 9.7% of registered health practitioners with a recognised speciality nationally, and
- ▶ 11.4% of health practitioners with a recognised endorsement or notation nationally, which permits an expanded scope of practice within their profession.

In 2015/16, applications received for registration in WA decreased by 0.8%, with 6,643 new applications. This equates to 10.2% of new applications received nationally during the year. Details of registration applications received, with a breakdown of profession and registration type, are provided in Table 7.

Note:

1. In general, national data about notifications include data from the Health Professional Councils Authority (HPCA) in NSW, except when categories used differ between NSW and the other states and territories.

Profession	WA	National total ⁴	% of national total
Aboriginal and Torres Strait Islander Health Practitioner	98	587	16.7%
Chinese Medicine Practitioner	254	4,762	5.3%
Chiropractor	602	5,167	11.7%
Dental Practitioner	2,548	21,741	11.7%
Medical Practitioner	10,756	107,179	10.0%
Medical Radiation Practitioner	1,325	15,303	8.7%
Midwife	385	4,122	9.3%
Nurse	34,664	346,387	10.0%
Nurse and Midwife ²	2,968	29,699	10.0%
Occupational Therapist	2,626	18,304	14.3%
Optometrist	417	5,142	8.1%
Osteopath	62	2,094	3.0%
Pharmacist	3,163	29,717	10.6%
Physiotherapist	3,475	28,855	12.0%
Podiatrist	442	4,655	9.5%
Psychologist	3,599	33,907	10.6%
Total 2015/16	67,384	657,621	10.2%
Total 2014/15	65,588	637,218	10.3%
Population as a proportion of national population³	2,603,900	23,940,300	10.9%

Notes:

1. Data are based on registered practitioners as at 30 June 2016.
2. Practitioners who hold dual registration as both a nurse and a midwife.
3. Based on Australian Bureau of Statistics demographics statistics as at 30 December 2015.
4. National total also includes registrants who have no specified principal place of practice.

Profession/registration type	WA	National total	% of national total
Aboriginal and Torres Strait Islander Health Practitioner	98	587	16.7%
General	97	585	16.6%
Non-practising	1	2	50.0%
Chinese Medicine Practitioner	254	4,762	5.3%
General	247	4,535	5.4%
Non-practising	7	227	3.1%
Chiropractor	602	5,167	11.7%
General	588	4,875	12.1%
Non-practising	14	292	4.8%
Dental Practitioner	2,548	21,741	11.7%
General	2,317	19,458	11.9%
General and non-practising ¹		1	0.0%
General and specialist	173	1,632	10.6%
Limited	2	74	2.7%
Non-practising	52	546	9.5%
Specialist	4	30	13.3%
Medical Practitioner	10,756	107,179	10.0%
General	3,719	36,953	10.1%
General (teaching and assessing)	2	36	5.6%
General (teaching and assessing) and specialist		2	0.0%
General and specialist	4,427	50,622	8.7%
Limited	374	2,705	13.8%
Non-practising	205	2,655	7.7%
Provisional	687	5,408	12.7%
Specialist	1,342	8,798	15.3%
Medical Radiation Practitioner	1,325	15,303	8.7%
General	1,308	14,541	9.0%
Limited		6	0.0%
Non-practising	12	234	5.1%
Provisional	5	522	1.0%

Profession/registration type	WA	National total	% of national total
Midwife	385	4,122	9.3%
General	378	4,050	9.3%
Non-practising	7	72	9.7%
Nurse	34,664	346,387	10.0%
General	34,215	341,071	10.0%
General and non-practising ¹	2	25	8.0%
Non-practising	426	5,161	8.3%
Provisional	21	130	16.2%
Nurse and Midwife	2,968	29,699	10.0%
General	2,844	27,680	10.3%
General and non-practising ²	77	1,337	5.8%
General and provisional		6	0.0%
Non-practising	47	671	7.0%
Provisional		5	0.0%
Occupational Therapist	2,626	18,304	14.3%
General	2,507	17,552	14.3%
Limited	9	69	13.0%
Non-practising	106	643	16.5%
Provisional	4	40	10.0%
Optometrist	417	5,142	8.1%
General	407	4,977	8.2%
Limited	1	5	20.0%
Non-practising	9	160	5.6%
Osteopath	62	2,094	3.0%
General	60	2,020	3.0%
Non-practising	1	66	1.5%
Provisional ³	1	8	12.5%
Pharmacist	3,163	29,717	10.6%
General	2,963	26,948	11.0%
Limited	1	7	14.3%
Non-practising	54	1,035	5.2%
Provisional	145	1,727	8.4%

Profession/registration type	WA	National total	% of national total
Physiotherapist	3,475	28,855	12.0%
General	3,369	27,667	12.2%
Limited	38	346	11.0%
Non-practising	68	842	8.1%
Podiatrist	442	4,655	9.5%
General	421	4,524	9.3%
General and specialist	17	30	56.7%
Non-practising	4	101	4.0%
Psychologist	3,599	33,907	10.6%
General	2,841	27,627	10.3%
Non-practising	174	1,658	10.5%
Provisional	584	4,622	12.6%
Total	67,384	657,621	10.2%

Notes:

1. Practitioners holding general registration in one division and non-practising registration in another division.
2. Practitioners holding general registration in one profession and non-practising registration in the other profession.
3. The Osteopathy Board introduced a category of provisional registration in 2013/14.

Table 3. Registered practitioners who hold an endorsement or notation with WA as the principal place of practice

Profession/ endorsement or notation	WA	National total	% of national total
Chiropractor		32	0.0%
Acupuncture		32	0.0%
Dentist	9	95	9.5%
Area of Practice	9	95	9.5%
Medical Practitioner	40	573	7.0%
Acupuncture	40	573	7.0%
Midwife¹	47	342	13.7%
Eligible Midwife ²	8	91	8.8%
Midwife Practitioner		1	0.0%
Scheduled Medicines	39	250	15.6%
Nurse¹	298	2,804	10.6%
Eligible Midwife ³	39	289	13.5%
Nurse Practitioner	238	1,418	16.8%
Scheduled Medicines	21	1,097	1.9%
Optometrist	189	2,387	7.9%
Scheduled Medicines	189	2,387	7.9%
Osteopath		2	0.0%
Acupuncture		2	0.0%
Physiotherapist		8	0.0%
Acupuncture		8	0.0%
Podiatrist	27	74	36.5%
Scheduled Medicines	27	74	36.5%
Psychologist	1,390	11,167	12.4%
Area of Practice	1,390	11,167	12.4%
Total	2,000	17,484	11.4%

Notes:

1. Nursing and midwifery registrants may hold dual nursing and midwifery registration and may have endorsements against each registration. Nursing and midwifery registrants may hold one or more endorsement/notation in each profession.
2. Holds notation of Eligible Midwife.
3. Holds dual registration as a nurse and a midwife, and holds notation of Eligible Midwife.

Table 4. Registered practitioners with WA as the principal place of practice, by profession and gender

Profession/gender	WA	National total	% of national total
Aboriginal and Torres Strait Islander Health Practitioner	98	587	16.7%
Female	78	452	17.3%
Male	20	135	14.8%
Chinese Medicine Practitioner	254	4,762	5.3%
Female	155	2,602	6.0%
Male	99	2,160	4.6%
Chiropractor	602	5,167	11.7%
Female	258	1,989	13.0%
Male	344	3,178	10.8%
Dental Practitioner	2,548	21,741	11.7%
Female	1,449	10,737	13.5%
Male	1,099	11,004	10.0%
Medical Practitioner	10,756	107,179	10.0%
Female	4,560	44,492	10.2%
Male	6,196	62,687	9.9%
Medical Radiation Practitioner	1,325	15,303	8.7%
Female	912	10,369	8.8%
Male	413	4,934	8.4%
Midwife	385	4,122	9.3%
Female	385	4,107	9.4%
Male		15	0.0%
Nurse	34,664	346,387	10.0%
Female	31,436	306,450	10.3%
Male	3,228	39,937	8.1%
Nurse and Midwife	2,968	29,699	10.0%
Female	2,925	29,177	10.0%
Male	43	522	8.2%
Occupational Therapist	2,626	18,304	14.3%
Female	2,417	16,749	14.4%
Male	209	1,555	13.4%
Optometrist	417	5,142	8.1%
Female	187	2,658	7.0%
Male	230	2,484	9.3%

Profession/gender	WA	National total	% of national total
Osteopath	62	2,094	3.0%
Female	32	1,137	2.8%
Male	30	957	3.1%
Pharmacist	3,163	29,717	10.6%
Female	1,990	18,243	10.9%
Male	1,173	11,474	10.2%
Physiotherapist	3,475	28,855	12.0%
Female	2,477	19,639	12.6%
Male	998	9,216	10.8%
Podiatrist	442	4,655	9.5%
Female	272	2,822	9.6%
Male	170	1,833	9.3%
Psychologist	3,599	33,907	10.6%
Female	2,876	26,909	10.7%
Male	723	6,998	10.3%
Total	67,384	657,621	10.2%

Table 5. Registered Chinese medicine, dental and medical radiation practitioners, and nurses and midwives with WA as the principal place of practice, by division

Profession/division	WA	National total	% of national total
Chinese Medicine Practitioner	254	4,762	5.3%
Acupuncturist	95	1,722	5.5%
Acupuncturist and Chinese Herbal Dispenser ¹		2	0.0%
Acupuncturist and Chinese Herbal Dispenser and Chinese Herbal Medicine Practitioner ¹	34	779	4.4%
Acupuncturist and Chinese Herbal Medicine Practitioner ¹	123	2,147	5.7%
Chinese Herbal Dispenser	2	45	4.4%
Chinese Herbal Dispenser and Chinese Herbal Medicine Practitioner ¹		17	0.0%
Chinese Herbal Medicine Practitioner		50	0.0%
Dental Practitioner	2,548	21,741	11.7%
Dental Hygienist	271	1,414	19.2%
Dental Hygienist and Dental Prosthetist ¹		3	0.0%
Dental Hygienist and Dental Prosthetist and Dental Therapist ¹		2	0.0%
Dental Hygienist and Dental Therapist ¹	54	480	11.3%
Dental Hygienist and Dental Therapist and Dentist		2	0.0%
Dental Hygienist and Dental Therapist and Oral Health Therapist		1	0.0%
Dental Hygienist and Dentist ¹		3	0.0%
Dental Hygienist and Oral Health Therapist ¹	3	6	50.0%
Dental Prosthetist	85	1,250	6.8%
Dental Prosthetist and Dental Therapist ¹		1	0.0%
Dental Prosthetist and Dentist ¹		1	0.0%

Profession/division	WA	National total	% of national total
Dental Therapist	289	1,016	28.4%
Dental Therapist and Dentist		1	0.0%
Dental Therapist and Oral Health Therapist ¹	4	4	100.0%
Dentist	1,737	16,264	10.7%
Dentist and Oral Health Therapist ¹		2	0.0%
Oral Health Therapist	105	1,291	8.1%
Medical Radiation Practitioner	1,325	15,303	8.7%
Diagnostic Radiographer	1,079	11,840	9.1%
Diagnostic Radiographer and Nuclear Medicine Technologist ¹	1	14	7.1%
Diagnostic Radiographer and Radiation Therapist ¹		2	0.0%
Nuclear Medicine Technologist	66	1,095	6.0%
Radiation Therapist	179	2,352	7.6%
Nurse	34,664	346,387	10.0%
Enrolled Nurse (Division 2)	5,406	62,994	8.6%
Enrolled Nurse (Division 2) and Registered Nurse (Division 1) ¹	544	6,465	8.4%
Registered Nurse (Division 1)	28,714	276,928	10.4%
Nurse and Midwife	2,968	29,699	10.0%
Enrolled Nurse and Midwife ¹		64	0.0%
Enrolled Nurse and Registered Nurse and Midwife ¹	10	66	15.2%
Registered Nurse and Midwife ¹	2,958	29,569	10.0%
Total	41,759	417,892	10.0%

Note:

1. Practitioners who hold dual or multiple registration.

Table 6. Health practitioners with specialties at 30 June 2016¹

Profession/area of specialty practice	WA	National total	% of national total
Dental Practitioner	180	1,714	10.5%
Dento-maxillofacial radiology	3	10	30.0%
Endodontics	16	163	9.8%
Forensic odontology	5	26	19.2%
Oral and maxillofacial surgery	55	202	10.9%
Oral medicine	7	35	20.0%
Oral pathology	3	24	12.5%
Oral surgery	1	51	2.0%
Orthodontics	54	605	8.9%
Paediatric dentistry	15	130	11.5%
Periodontics	32	223	14.3%
Prosthodontics	21	213	9.9%
Public health dentistry (community dentistry)	1	16	6.3%
Special needs dentistry		16	0.0%
Medical Practitioner	6,248	64,463	9.7%
Addiction medicine	13	168	7.7%
Anaesthesia	525	4,782	11.0%
Dermatology	44	528	8.3%
Emergency medicine	221	1,904	11.6%
General practice	2,505	24,471	10.2%
Intensive care medicine	78	856	9.1%
Paediatric intensive care medicine		7	0.0%
No subspecialty declared	78	849	9.2%
Medical administration	29	331	8.8%

Profession/area of specialty practice	WA	National total	% of national total
Obstetrics and gynaecology	174	1,932	9.0%
Gynaecological oncology	4	46	8.7%
Maternal-fetal medicine	5	40	12.5%
Obstetrics and gynaecological ultrasound	3	76	3.9%
Reproductive endocrinology and infertility	2	54	3.7%
Urogynaecology	4	31	12.9%
No subspecialty declared	156	1,685	9.3%
Occupational and environmental medicine	45	308	14.6%
Ophthalmology	79	991	8.0%
Paediatrics and Child Health	275	2,555	10.8%
Paediatric intensive care medicine		6	0.0%
Clinical genetics	1	26	3.8%
Community child health	4	52	7.7%
General paediatrics	180	1,825	9.9%
Neonatal and perinatal medicine	29	174	16.7%
Paediatric cardiology	4	36	11.1%
Paediatric clinical pharmacology		1	0.0%
Paediatric emergency medicine	8	51	15.7%
Paediatric endocrinology	4	32	12.5%
Paediatric gastroenterology and hepatology	4	24	16.7%
Paediatric haematology	1	11	9.1%
Paediatric immunology and allergy		20	0.0%
Paediatric infectious diseases	1	19	5.3%
Paediatric medical oncology	6	27	22.2%
Paediatric nephrology	1	11	9.1%
Paediatric neurology	2	35	5.7%
Paediatric palliative medicine		2	0.0%

Profession/area of specialty practice	WA	National total	% of national total
Paediatric rehabilitation medicine	1	8	12.5%
Paediatric respiratory and sleep medicine	4	27	14.8%
Paediatric rheumatology	3	12	25.0%
No subspecialty declared	22	156	14.1%
Pain medicine	33	276	12.0%
Palliative medicine	32	312	10.3%
Pathology	236	2,073	11.4%
Anatomical pathology (including cytopathology)	99	892	11.1%
Chemical pathology	17	95	17.9%
Forensic pathology	5	48	10.4%
General pathology	7	123	5.7%
Haematology	45	513	8.8%
Immunology	18	118	15.3%
Microbiology	36	231	15.6%
No subspecialty declared	9	53	17.0%
Physician	811	9,779	8.3%
Cardiology	87	1,313	6.6%
Clinical genetics	5	72	6.9%
Clinical pharmacology	5	55	9.1%
Endocrinology	49	658	7.4%
Gastroenterology and hepatology	66	836	7.9%
General medicine	136	1,785	7.6%
Geriatric medicine	73	661	11.0%
Haematology	40	532	7.5%
Immunology and allergy	24	159	15.1%
Infectious diseases	34	408	8.3%
Medical oncology	37	626	5.9%
Nephrology	41	522	7.9%
Neurology	44	567	7.8%
Nuclear medicine	20	261	7.7%
Respiratory and sleep medicine	62	651	9.5%
Rheumatology	30	365	8.2%
No subspecialty declared	58	308	18.8%

Profession/area of specialty practice	WA	National total	% of national total
Psychiatry	318	3,565	8.9%
Public health medicine	43	434	9.9%
Radiation oncology	20	380	5.3%
Radiology	245	2,368	10.3%
Diagnostic radiology	211	2,023	10.4%
Diagnostic ultrasound		4	0.0%
Nuclear medicine	10	186	5.4%
No subspecialty declared	24	155	15.5%
Rehabilitation medicine	16	497	3.2%
Sexual health medicine	7	123	5.7%
Sport and exercise medicine	10	119	8.4%
Surgery	489	5,711	8.6%
Cardio-thoracic surgery	13	201	6.5%
General surgery	147	1,974	7.4%
Neurosurgery	19	247	7.7%
Oral and maxillofacial surgery	14	123	11.4%
Orthopaedic surgery	135	1,394	9.7%
Otolaryngology – head and neck surgery	45	498	9.0%
Paediatric surgery	8	103	7.8%
Plastic surgery	46	450	10.2%
Urology	40	434	9.2%
Vascular surgery	19	229	8.3%
No subspecialty declared	3	58	5.2%
Podiatrist	17	30	56.7%
Podiatric surgeon	17	30	56.7%
Total	6,445	66,207	9.7%

Note:

- The data above record the number of practitioners with registration in the specialist fields listed. Individual practitioners may be registered to practise in more than one specialist field.

Table 7. Applications received, by profession and registration type			
Profession/registration type	WA	National total	% of national total
Aboriginal and Torres Strait Islander Health Practitioner	68	269	25.3%
General	68	268	25.4%
Non-practising		1	0.0%
Chinese Medicine Practitioner	38	742	5.1%
General	34	546	6.2%
Non-practising	4	196	2.0%
Chiropractor	53	394	13.5%
General	50	340	14.7%
Limited		3	0.0%
Non-practising	3	51	5.9%
Dental Practitioner	178	1,536	11.6%
General	151	1,280	11.8%
Limited	2	46	4.3%
Non-practising	12	143	8.4%
Specialist	13	67	19.4%
Medical Practitioner	1,842	16,203	11.4%
General	573	5,280	10.9%
Limited	239	1,720	13.9%
Non-practising	33	393	8.4%
Provisional	635	5,453	11.6%
Specialist	362	3,357	10.8%
Medical Radiation Practitioner	82	1,722	4.8%
General	74	1,160	6.4%
Limited		6	0.0%
Non-practising	5	82	6.1%
Provisional	3	474	0.6%
Midwife	188	1,715	11.0%
General	152	1,401	10.8%
Non-practising	35	297	11.8%
Provisional	1	17	5.9%
Nurse	2,632	28,854	9.1%
General	2,449	27,031	9.1%
Non-practising	132	1,513	8.7%
Provisional	51	310	16.5%

Profession/ registration type	WA	National total	% of national total
Occupational Therapist	322	2,200	14.6%
General	254	1,799	14.1%
Limited	11	81	13.6%
Non-practising	51	287	17.8%
Provisional	6	33	18.2%
Optometrist	33	399	8.3%
General	28	365	7.7%
Limited	3	6	50.0%
Non-practising	2	28	7.1%
Osteopath	5	207	2.4%
General	3	163	1.8%
Non-practising	1	28	3.6%
Provisional	1	16	6.3%
Pharmacist	316	3,324	9.5%
General	171	1,622	10.5%
Limited	5	29	17.2%
Non-practising	10	151	6.6%
Provisional	130	1,522	8.5%
Physiotherapist	295	2,505	11.8%
General	244	2,101	11.6%
Limited	28	244	11.5%
Non-practising	23	160	14.4%
Podiatrist	14	445	3.1%
General	11	408	2.7%
Non-practising	2	36	5.6%
Specialist	1	1	100.0%
Psychologist	577	4,759	12.1%
General	191	1,773	10.8%
Non-practising	78	529	14.7%
Provisional	308	2,457	12.5%
Total 2015/16	6,643	65,274	10.2%
Total 2014/15	6,695	61,517	10.9%

Table 8. Outcome of applications for registration finalised in 2015/16

Outcome	WA	National total ²	% of national total
Register	5,984	57,260	10.5%
Register with conditions	230	1,716	13.4%
Register in a type other than applied for	19	150	12.7%
Register in a type other than applied for with conditions	15	130	11.5%
Refuse application	198	2,706	7.3%
Withdrawn	382	3,823	10.0%
Other	8	191	4.2%
Total 2015/16 (PPP)¹	6,836	65,976	10.4%

Notes:

1. Based on state and territory of the applicant's principal place of practice (PPP).
2. National total figure includes overseas applicants and applicants who did not indicate their PPP.

Table 9. Domestic and international criminal history checks in WA and nationally, by profession, and cases where a criminal history check resulted in, or contributed to, imposition of conditions or undertakings

State/territory ¹	WA					National 2015/16			
Profession	Number of CHCs ²	Number of DCOs ³	% of DCOs resulting from CHCs	Conditions/undertakings resulting from CHCs	% of total national CHCs resulted in conditions/undertakings	Number of CHCs ²	Number of DCOs ³	% of DCOs resulting from CHCs	Conditions/undertakings resulting from CHCs
Aboriginal and Torres Strait Islander Health Practitioner	96	67	69.8%	1	100.0%	396	193	48.7%	1
Chinese Medicine Practitioner	54	6	11.1%		0.0%	933	60	6.4%	
Chiropractor	102	8	7.8%		0.0%	787	66	8.4%	
Dental Practitioner	212	12	5.7%		0.0%	1,992	96	4.8%	1
Medical Practitioner	1,191	35	2.9%		0.0%	11,891	267	2.2%	
Medical Radiation Practitioner	158	5	3.2%		0.0%	1,728	61	3.5%	
Midwife	81	7	8.6%		0.0%	859	52	6.1%	
Nurse	3,354	236	7.0%	5	83.3%	36,140	1,977	5.5%	6
Occupational Therapist	310	14	4.5%		0.0%	2,288	66	2.9%	
Optometrist	24		0.0%		0.0%	408	5	1.2%	
Osteopath	3		0.0%		0.0%	185	15	8.1%	
Pharmacist	237	11	4.6%		0.0%	2,516	86	3.4%	1
Physiotherapist	312	19	6.1%		0.0%	2,702	94	3.5%	
Podiatrist	52	7	13.5%		0.0%	814	54	6.6%	
Psychologist	361	32	8.9%		0.0%	3,059	183	6.0%	1
Total 2015/16	6,547	459	7.0%	6	60.0%	66,698	3,275	4.9%	10
Total 2014/15	5,737	476	8.3%	9	24.3%	51,947	3,100	6.0%	37

Notes:

1. For 2015/16, figures are reported by principal place of practice. For 2014/15, figures are reported by the state/territory location of the preferred address as advised by the applicant/registrant. Where this can't be identified, the location of the office assessing the application is used.
2. Criminal history checks. Refers to both domestic and international criminal history checks submitted. International criminal history checks started in 2014/15.
3. Disclosable court outcomes.

Criminal history checks

Under the National Law, applicants for initial registration must undergo criminal history checks. A common criminal history standard is used across all 14 National Boards.

Nationally, AHPRA carried out 66,698 domestic and international criminal record checks of registrants in 2015/16, an increase of 28.4% from the previous year. The increase is largely due to a new approach to checking international criminal history, which was introduced in 2014/15.

In 2015/16, there were 6,547 criminal history checks carried out for applicants with a PPP in WA. Of those, 459 resulted in disclosable court outcomes. See Table 9, on page 24.

Table 10 provides an overview of cases where a criminal history check resulted in, or contributed to the imposition of conditions by a Board or undertakings given by a practitioner. There were six such cases in WA in 2015/16; three fewer than in 2014/15.

Table 10. Cases in 2015/16 where a criminal history check resulted in, or contributed to, imposition of conditions or undertakings, by profession

Profession	WA	National total	% of national total
Aboriginal and Torres Strait Islander Health Practitioner	1	1	100.0%
Chinese Medicine Practitioner		0	0.0%
Chiropractor		0	0.0%
Dentist		1	0.0%
Medical Practitioner		0	0.0%
Medical Radiation Practitioner		0	0.0%
Midwife		0	0.0%
Nurse	5	6	83.3%
Occupational Therapist		0	0.0%
Optometrist		0	0.0%
Osteopath		0	0.0%
Pharmacist		1	0.0%
Physiotherapist		0	0.0%
Podiatrist		0	0.0%
Psychologist		1	0.0%
Total 2015/16	6	10	60.0%
Total 2014/15	9	37	24.3%

Notifications in WA

Notifications are complaints or concerns that are raised with AHPRA about registered health practitioners or students practising in Australia, excluding NSW, where complaints are handled by the Health Professional Councils Authority (HPCA), and Queensland, where complaints may be referred to AHPRA by the Office of the Health Ombudsman (OHO).

Tables 11–23 contain data relating to notifications about registered health practitioners with a principal place of practice (PPP) in WA. Some tables do not include data from the HPCA in NSW, as indicated in the table headings.

Nationally, notifications received in 2015/16 increased by 19.7% (including those managed by the HPCA). However, notifications received about practitioners with a PPP in WA decreased by 8.1%, to 718 complaints, compared with 781 in the previous year. This represents 7.1% of all notifications received nationally.

Of the new notifications received, mandatory notifications in WA decreased from 114 in 2014/15 to 100 in 2015/16; this represents 10.2% of mandatory notifications nationally in 2015/16.

The number of open notifications in WA at the end of June 2016 was 28 more than the previous year (495, compared with 467 at the end of the 2014/15 year). This represented 8.6% of open matters nationally.

The percentage of the WA registrant base with notifications received in 2015/16 was 1.2%, which was 0.3% lower than the national percentage.

A large proportion of notifications (288) were about clinical care. See Table 14.

Notifications received came largely from the patient (276), the practitioner's employer (94) or another practitioner (76).

There were 80 cases where immediate action was initiated against practitioners in WA. In 76 of these cases the registration of the practitioner was suspended or restricted in order to protect the public. In the remaining four cases the Board determined that no further action was required¹. See Table 16.

As at 30 June 2016, there were three open notifications in WA that were received before the National Law took effect in 2010. Two of these matters are awaiting a tribunal decision. See Table 17 for national data.

Tables 18–22 detail the outcomes of key stages in the notifications process during 2015/16; note the national data in these tables do not include data for NSW because complaints in that jurisdiction are managed by the HPCA.

The majority of the 867 enquiries received about WA registrants in 2015/16 were considered to meet the criteria for a notification (761) and an assessment commenced.

On completion of assessment of cases in 2015/16, 326 cases were closed and 338 cases were taken to a further stage. See Table 19.

Twelve cases were closed following a panel hearing and 36 following a tribunal hearing. See Tables 21 and 22.

In total, 654 matters were closed in WA in 2015/16. See Table 23.

Note:

1. No further action is usually taken when, based on the available information, the Board determines there is no risk to the public that meets the threshold for regulatory action or because a practitioner has taken steps to voluntarily address issues of concern.

Table 11. Notifications received or closed in 2015/16 or remaining open at 30 June 2016, by profession

Notifications	All received		Mandatory received			Closed			Open at 30 June			
	WA	National total	% of national total	WA	National total	% of national total	WA	National total	% of national total	WA	National total	% of national total
Aboriginal and Torres Strait Islander Health Practitioner		5	0.0%		1	0.0%	1	9	11.1%		1	0.0%
Chinese Medicine Practitioner		54	0.0%		4	0.0%		36	0.0%		33	0.0%
Chiropractor	12	146	8.2%	2	10	20.0%	10	101	9.9%	15	126	11.9%
Dental Practitioner	86	1,025	8.4%	2	27	7.4%	64	794	8.1%	75	621	12.1%
Medical Practitioner	382	5,371	7.1%	37	272	13.6%	369	4,714	7.8%	223	2,882	7.7%
Medical Radiation Practitioner	4	48	8.3%	3	7	42.9%	5	38	13.2%	1	27	3.7%
Midwife	11	103	10.7%	3	16	18.8%	12	83	14.5%	7	82	8.5%
Nurse	130	1,942	6.7%	41	519	7.9%	120	1,762	6.8%	78	1,226	6.4%
Occupational Therapist	5	59	8.5%		2	0.0%	5	56	8.9%	2	25	8.0%
Optometrist	1	39	2.6%		1	0.0%	2	44	4.5%	1	15	6.7%
Osteopath	1	23	4.3%		1	0.0%	1	27	3.7%		9	0.0%
Pharmacist	28	570	4.9%	7	38	18.4%	20	537	3.7%	30	330	9.1%
Physiotherapist	10	102	9.8%	1	5	20.0%	4	93	4.3%	9	67	13.4%
Podiatrist	8	57	14.0%		5	0.0%	7	49	14.3%	3	28	10.7%
Psychologist	40	528	7.6%	4	72	5.6%	34	484	7.0%	51	316	16.1%
Unknown ¹		10	0.0%			0.0%		12	0.0%		1	0.0%
Total 2015/16 (PPP)²	718	10,082	7.1%	100	980	10.2%	654	8,839	7.4%	495	5,789	8.6%
Total 2014/15 (PPP)²	781	8,426	9.3%	114	833	13.7%	820	9,003	9.1%	467	4,531	10.3%
Total 2014/15 (Responsible Office)³	781	8,426	9.3%	114	833	13.7%	820	9,003	9.1%	467	4,531	10.3%

Notes:

1. Profession of registrant is not always identifiable in the early stages of a notification.
2. For 2015/16, notifications are based on the state or territory of the practitioner's principal place of practice (PPP).
3. Prior to the above, notifications were based on the location of the AHPRA state or territory office that handled the notification (Responsible Office).

Profession	WA	National total
Aboriginal and Torres Strait Islander Health Practitioner	0.0%	0.9%
Chinese Medicine Practitioner	0.0%	1.1%
Chiropractor	2.0%	2.8%
Dentist	3.4%	4.7%
Medical Practitioner	3.6%	5.0%
Medical Radiation Practitioner	0.3%	0.3%
Midwife ²	0.3%	0.3%
Nurse ³	0.3%	0.5%
Occupational Therapist	0.2%	0.3%
Optometrist	0.2%	0.8%
Osteopath	1.6%	1.1%
Pharmacist	0.9%	1.9%
Physiotherapist	0.3%	0.4%
Podiatrist	1.8%	1.2%
Psychologist	1.1%	1.6%
Total 2015/16 (PPP)⁴	1.1%	1.5%
Total 2014/15 (PPP)⁴	1.2%	1.3%
Total 2014/15 (Responsible Office)⁴	1.2%	1.3%

Notes:

- Percentages are based on registrants whose profession and principal place of practice (PPP) have been identified.
- The registrant base for midwives includes registrants with midwifery or with nursing and midwifery registration.
- The registrant base used for nurses includes registrants with midwifery or with nursing and midwifery registration.
- For 2015/16, notifications are based on the practitioner's PPP. Prior to this, notifications were based on the state or territory where the notification was handled (Responsible Office).

Issue	WA	National total	% of national total
Behaviour	32	374	8.6%
Billing	17	178	9.6%
Boundary violation	27	344	7.8%
Clinical care	288	4,208	6.8%
Communication	54	668	8.1%
Confidentiality	23	248	9.3%
Conflict of interest	1	20	5.0%
Discrimination		27	0.0%
Documentation	51	436	11.7%
Health impairment	52	932	5.6%
Infection/hygiene	10	87	11.5%
Informed consent	9	116	7.8%
Medico-legal conduct	11	146	7.5%
National Law breach	27	299	9.0%
National Law offence	1	277	0.4%
Offence	21	329	6.4%
Offence by student		9	0.0%
Other	21	170	12.4%
Pharmacy/medication	62	1,062	5.8%
Research/teaching/assessment		20	0.0%
Response to adverse event	2	43	4.7%
Teamwork/supervision	8	65	12.3%
Not recorded	1	24	4.2%
Total	718	10,082	7.1%

Year	2015/16 (PPP) ¹		2014/15 (PPP) ¹		2014/15 (Responsible Office) ²	
	No. practitioners ³	Rate/10,000 practitioners ⁴	No. practitioners ³	Rate/10,000 practitioners ⁴	No. practitioners ³	Rate/10,000 practitioners ⁴
WA	97	14.4	102	15.6	110	16.8
Total Australia	920	14.0	789	12.4	789	12.4

Notes:

- Principal place of practice (PPP).
- State or territory where the notification is handled for registrants, including those registrants who do not reside in Australia.
- Figures represent the number of practitioners involved in the mandatory reports received.
- Practitioners with no PPP are not represented in the calculation of a rate for each state, but are included in the calculation of the Total Australia rate.

Table 15. Source of notifications received in 2015/16

Source	WA	National total (excluding HPCA) ¹	% of national total (excluding HPCA)
Anonymous	16	112	14.3%
Drugs and poisons		24	0.0%
Education provider	1	21	4.8%
Employer	94	568	16.5%
Government department	6	155	3.9%
Health complaints entity	46	434	10.6%
Health advisory service		28	0.0%
Hospital		71	0.0%
Insurance company	2	14	14.3%
Lawyer		44	0.0%
Member of Parliament		2	0.0%
Member of the public	27	340	7.9%
Ombudsman		35	0.0%
Other Board	4	39	10.3%
Other practitioner	76	741	10.3%
Own motion	45	329	13.7%
Patient	276	2,022	13.6%
Police	5	93	5.4%
Relative	71	596	11.9%
Self	10	182	5.5%
Treating practitioner	5	58	8.6%
Unclassified	34	148	23.0%
Total	718	6,056	11.9%

Note:

1. The national total excludes Health Professional Councils Authority (HPCA) data as the categorisation of 'source' differs between the HPCA and AHPRA.

Table 16. Immediate action cases about notifications received in 2015/16

Outcome	WA	National total	% of national total
Not take immediate action	4	139	2.9%
Accept undertaking	11	67	16.4%
Impose conditions	60	405	14.8%
Accept surrender of registration		13	0.0%
Suspend registration	3	106	2.8%
Decision pending	2	19	10.5%
Total	80	749	10.7%

Table 17. Notifications under previous legislation open at 30 June 2016, by profession (excluding HPCA)

Profession	WA	National total ¹	% of national total
Aboriginal and Torres Strait Islander Health Practitioner		0	0.0%
Chinese Medicine Practitioner		0	0.0%
Chiropractor		2	0.0%
Dental Practitioner		0	0.0%
Medical Practitioner	2	7	28.6%
Medical Radiation Practitioner		0	0.0%
Midwife		0	0.0%
Nurse		0	0.0%
Occupational Therapist		0	0.0%
Optometrist		0	0.0%
Osteopath		0	0.0%
Pharmacist		3	0.0%
Physiotherapist		0	0.0%
Podiatrist		0	0.0%
Psychologist	1	2	50.0%
Total 2015/16	3	14	21.4%
Total 2014/15	5	38	13.2%

Note:

1. Of the 14 open matters in the national total for 2015/16, 13 are lodged with a tribunal.

Outcomes	WA	National total	% of national total
Moved to notification, complaint or offence	761	6,214	12.2%
Closed at lodgement	92	1,576	5.8%
Yet to be determined	14	374	3.7%
Total	867	8,164	10.6%

Outcome of decisions to take the notification further	WA	National total (excluding HPCA)	% of national total
Health or performance assessment	16	295	5.4%
Investigation	321	1,975	16.3%
Panel hearing	1	16	6.3%
Tribunal hearing		3	0.0%
Total	338	2,289	14.8%
Outcome of notifications closed following assessment			
No further action	296	2,358	12.6%
Health complaints entity to retain		109	0.0%
Refer all or part of the notification to another body	2	33	6.1%
Dealt with as enquiry	1	47	2.1%
Managed as a complaint by a co-regulator		5	0.0%
Managed as an offence under part 7 of the National Law		7	0.0%
Caution	22	367	6.0%
Accept undertaking	1	46	2.2%
Impose conditions	4	164	2.4%
Practitioner surrenders registration		2	0.0%
Total	326	3,138	10.4%

Outcome of decisions to take the notification further	WA	National total (excluding HPCA)	% of national total
Assessment	1	16	6.3%
Health or performance assessment	9	116	7.8%
Panel hearing	11	79	13.9%
Tribunal hearing	31	100	31.0%
Total	52	311	16.7%
Outcome of notifications closed following investigation			
No further action	178	838	21.2%
Health complaints entity to retain		8	0.0%
Refer all or part of the notification to another body		11	0.0%
Dealt with as enquiry		1	0.0%
Managed as a complaint by a co-regulator		5	0.0%
Caution	40	272	14.7%
Accept undertaking	4	72	5.6%
Impose conditions	44	189	23.3%
Suspend registration		1	0.0%
Total	266	1,397	19.0%

Outcome	WA	National total (excluding HPCA)	% of national total
No further action	5	32	15.6%
Accept undertaking		1	0.0%
Caution	4	39	10.3%
Reprimand	1	11	9.1%
Impose conditions	1	88	1.1%
Practitioner surrenders registration		1	0.0%
Suspend registration	1	1	100.0%
Total	12	173	6.9%

Outcome	WA	National total (excluding HPCA)	% of national total
No further action	5	18	27.8%
Caution	1	3	33.3%
Reprimand	2	21	9.5%
Fine registrant	4	5	80.0%
Accept undertaking		2	0.0%
Impose conditions	3	28	10.7%
Practitioner surrenders registration	1	3	33.3%
Suspend registration	6	44	13.6%
Cancel registration	9	34	26.5%
Not permitted to reapply for registration for a period of 12 months	1	8	12.5%
Withdrawn	4	9	44.4%
Total	36	175	20.6%

Profession	Assessment	Investigation	Health or performance assessment	Panel hearing	Tribunal hearing	Total 2015/16
Aboriginal and Torres Strait Islander Health Practitioner			1			1
Chinese Medicine Practitioner						0
Chiropractor	2	7		1		10
Dental Practitioner	27	29		2	6	64
Medical Practitioner	211	126	8	4	20	369
Medical Radiation Practitioner		3			2	5
Midwife	5	7				12
Nurse	50	56	7	2	5	120
Occupational Therapist	4	1				5
Optometrist		2				2
Osteopath	1					1
Pharmacist	5	11	1		3	20
Physiotherapist	1	3				4
Podiatrist	3	4				7
Psychologist	18	13		3		34
Not identified ¹						0
Total 2015/16	327	262	17	12	36	654

Note:

1. Practitioner profession may not have been identified in notifications closed at an early stage.

Monitoring and compliance

AHPRA's monitoring and compliance team monitors health practitioners and students with restrictions on their registration, or whose registration has been suspended or cancelled.

Monitoring ensures practitioners are complying with restrictions placed on their registration. Each case is assigned to one of five streams, where the below affects a practitioner or student's ability or performance:

- ▶ **health:** physical or mental impairment, disability, condition or disorder (including substance abuse or dependence)
- ▶ **performance:** deficiencies in knowledge, skill, judgement or care
- ▶ **conduct:** where they have a criminal history or have demonstrated a lesser standard of professional care than expected
- ▶ **suitability/eligibility:** they do not hold an approved or equivalent qualification; lack English-language skills; do not meet the requirements for recency of practice or do not meet approved registration standards, or
- ▶ **prohibited practitioner/student:** they are subject to a cancellation order, surrender of registration or change to non-practising registration or suspension.

At 30 June 2016, there were 635 cases under active compliance monitoring in WA.

WA accounted for 12.8% of all cases nationally under active monitoring. The majority of these registrants were medical practitioners (242) or nurses (154). See Tables 24 and 25.

Table 24. Active monitoring cases at 30 June 2016, by profession (excluding HPCA)

Profession	WA	National total (excluding HPCA)	% of national total
Aboriginal and Torres Strait Islander Health Practitioner	35	73	47.9%
Chinese Medicine Practitioner	75	954	7.9%
Chiropractor	11	46	23.9%
Dental Practitioner	17	141	12.1%
Medical Practitioner	242	1,767	13.7%
Medical Radiation Practitioner	8	109	7.3%
Midwife	37	144	25.7%
Nurse	154	1,274	12.1%
Occupational Therapist	6	36	16.7%
Optometrist	3	17	17.6%
Osteopath		9	0.0%
Pharmacist	17	178	9.6%
Physiotherapist	8	60	13.3%
Podiatrist		21	0.0%
Psychologist	22	134	16.4%
Total	635	4,963	12.8%

Table 25: Active monitoring cases at 30 June 2016 in WA and nationally, by stream

Jurisdiction	Conduct ¹	Health ¹	Performance ¹	Prohibited practitioner/student	Suitability/eligibility ²	Total 2015/16
WA	42	64	75	35	419	635
National 2015/16 ³	709	1,000	677	219	3,129	5,734
% of national total	5.9%	6.4%	11.1%	16.0%	13.4%	11.1%

Notes:

1. Includes cases to be transitioned from AHPRA to HPCA for Conduct, Health and Performance streams.
2. AHPRA performs monitoring of compliance cases in 'suitability/eligibility' matters for NSW registrations.
3. Includes cases monitored by the HPCA.

Statutory offence complaints

In order to protect the public, the National Law sets out the following types of statutory offences:

- ▶ unlawful use of protected titles
- ▶ performing restricted acts
- ▶ holding out (unlawful claims by individuals or organisations as to registration), and
- ▶ unlawful advertising.

These offences are prosecuted in the Magistrates' Court (or equivalent) of the relevant state or territory, and carry penalties or fines that may be imposed on a finding of guilt.

Nationally, AHPRA received 1,348 statutory offence complaints in 2015/16 (166% more than in 2014/15). This increase was largely due to a series

of complaints made by organisations about alleged advertising breaches, which made up 75% of all complaints. Of these, 57.3% were about chiropractic services, 16% were about dental services and 13.1% were about medical services.

WA received 8.3% of offence complaints nationally, with 112 new matters. Almost all related to title protection or advertising concerns. See Table 26.

Fifty-two statutory offences were closed in WA in 2015/16, which is 37.7% less than in 2014/15. AHPRA continues to work with the jurisdictions to proactively target strategies to best manage the increase in volume to ensure fast and efficient processes for the coming year.

Profession	WA		National total ²		% of national total	
	Received	Closed	Received	Closed	Received	Closed
Aboriginal and Torres Strait Islander Health Practitioner			0	0	0.0%	0.0%
Chinese Medicine Practitioner	1		26	12	3.8%	0.0%
Chiropractor	65	2	601	68	10.8%	2.9%
Dental Practitioner	14	16	196	157	7.1%	10.2%
Medical Practitioner	8	14	202	128	4.0%	10.9%
Medical Radiation Practitioner	1		8	7	12.5%	0.0%
Midwife			33	6	0.0%	0.0%
Nurse	4	5	54	40	7.4%	12.5%
Occupational Therapist			6	5	0.0%	0.0%
Optometrist		1	9	9	0.0%	11.1%
Osteopath		1	12	25	0.0%	4.0%
Pharmacist	2	1	13	13	15.4%	7.7%
Physiotherapist	6	5	66	40	9.1%	12.5%
Podiatrist	5	3	26	17	19.2%	17.6%
Psychologist	6	4	83	64	7.2%	6.3%
Unknown ³			13	9	0.0%	0.0%
Total 2015/16 (PPP)⁴	112	52	1,348	600	8.3%	8.7%
Total 2014/15 (PPP)⁴	42	83	506	518	8.3%	16.0%

Notes:

1. This table captures offence complaints by principal place of practice (PPP) and includes all offences from sections 113–116 of the National Law, not only offences about advertising, title and practice protection.
2. The national total includes offences managed about unregistered persons where there is no PPP recorded.
3. AHPRA also receives offence complaints about unregistered persons where there is no PPP recorded. Only registered practitioners have a designated PPP.
4. Based on state and territory of the practitioner's principal place of practice (PPP).

CONTACT/COPIES

Mail

Publications Manager
AHPRA National Office
GPO Box 9958
Melbourne VIC 3000

Phone

1300 419 495

Email

Via the online enquiry form at the AHPRA website:
www.ahpra.gov.au

Annual report online

www.ahpra.gov.au/annualreport

COPYRIGHT

©AUSTRALIAN HEALTH PRACTITIONER REGULATION AGENCY, 2016
This publication may be photocopied, transmitted and distributed for educational and research purposes.

PUBLISHED

Australian Health Practitioner Regulation Agency
Melbourne, December 2016
ISSN: 2204-1265

ACKNOWLEDGEMENTS

Thank you to all AHPRA contributors.

PRINTED

Cover printed on Precision Offset 310 gsm
Internals printed on Precision Offset 120 gsm



FIND US

Twitter: twitter.com/AHPRA
Facebook: facebook.com/AHPRA
LinkedIn: Search for [AHPRA](#)

Australian Health Practitioner Regulation Agency

GPO Box 9958 in your capital city
www.ahpra.gov.au

- ▶ **Australian Capital Territory**
Level 2
103-105 Northbourne Avenue
Turner ACT 2612
- ▶ **New South Wales**
Level 51
680 George Street
Sydney NSW 2000
- ▶ **Northern Territory**
Level 5
22 Harry Chan Avenue
Darwin NT 0800
- ▶ **Queensland**
Level 18
179 Turbot Street
Brisbane QLD 4000
- ▶ **South Australia**
Level 11
80 Grenfell Street
Adelaide SA 5000
- ▶ **Tasmania**
Level 5
99 Bathurst Street
Hobart TAS 7000
- ▶ **Victoria**
Level 8
111 Bourke Street
Melbourne VIC 3000
- ▶ **Western Australia**
Level 1
541 Hay Street
Subiaco WA 6008

Connect with us



@ahpra



/ahpra.gov.au



Search for AHPRA