

Number of applications

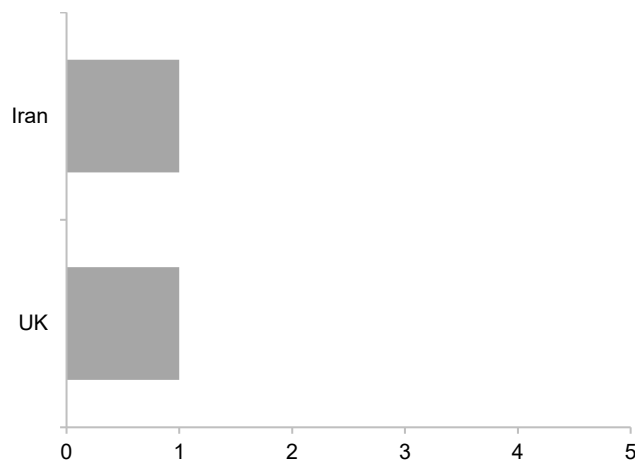
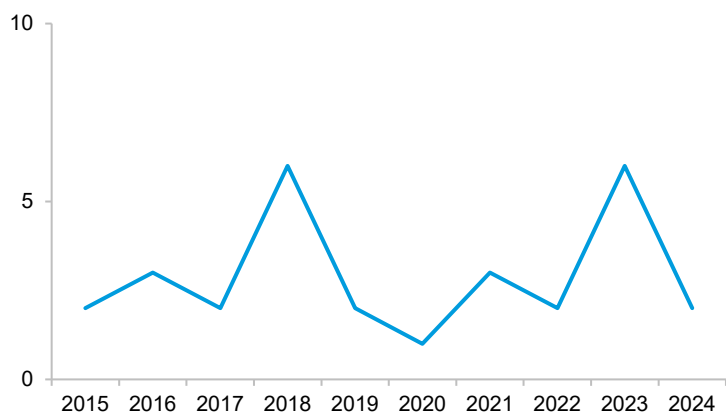
Country of specialist qualification

Applications

2

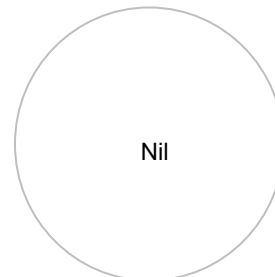
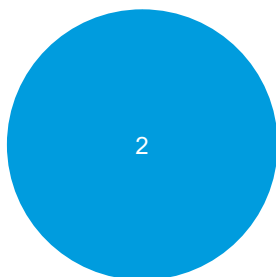
Total SIMGs on the pathway

9



Interim assessment outcome

Recommended for specialist recognition

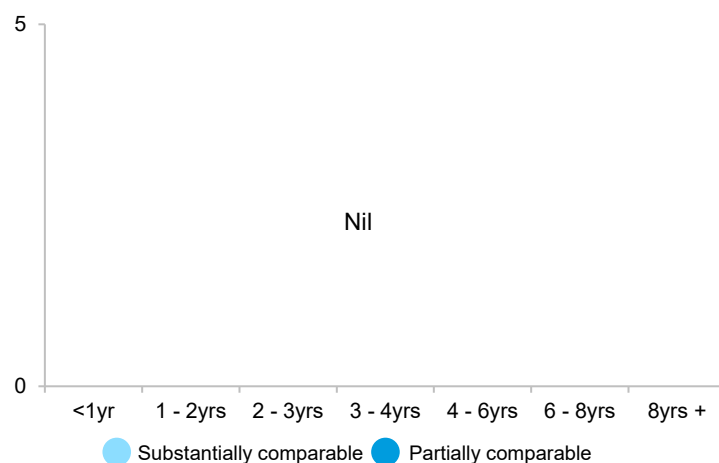
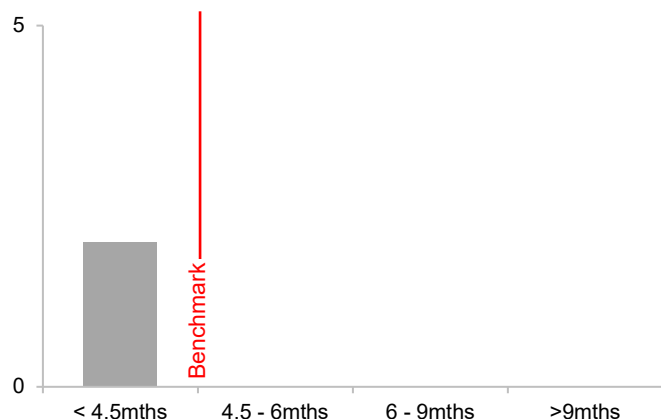


● Substantially comparable ● Partially comparable ● Not comparable

● Recommended ● Not recommended

SIMGs starting in 2024: Time for interim assessment

SIMGs finishing in 2024: Total time on pathway



● Substantially comparable ● Partially comparable