



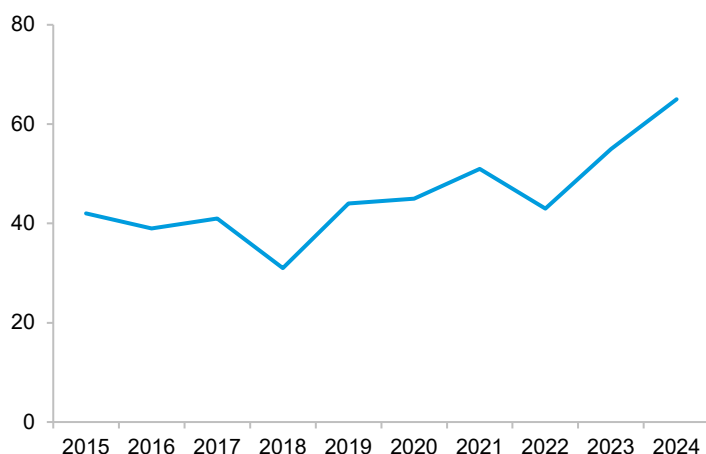
### Number of applications

Applications

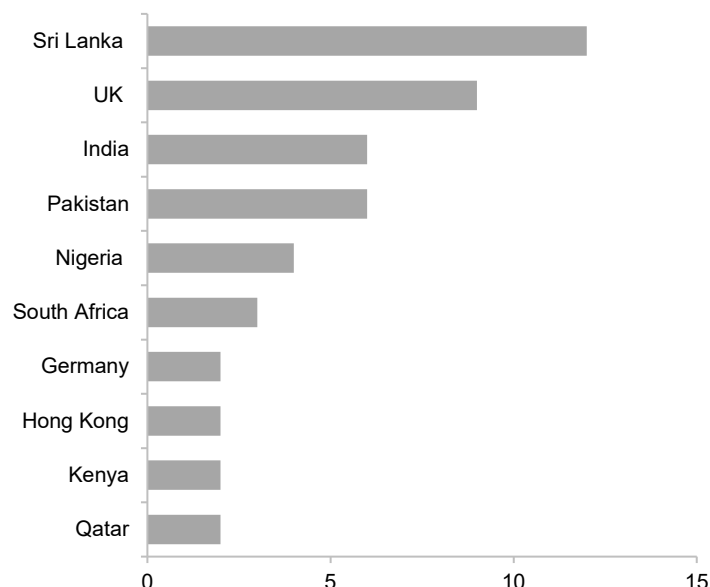
**65**

Total SIMGs on the pathway

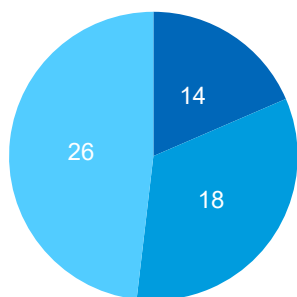
**114**



### Country of specialist qualification (top 10)

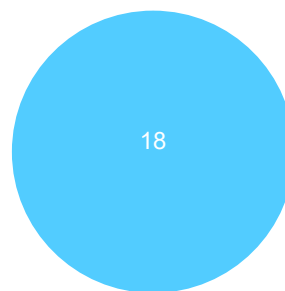


### Interim assessment outcome



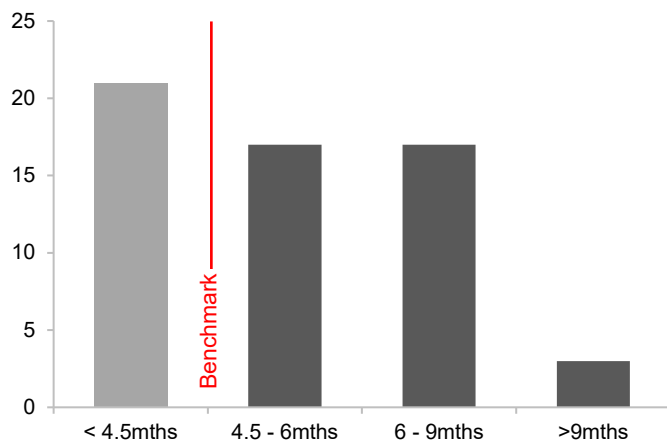
● Substantially comparable ● Partially comparable ● Not comparable

### Recommended for specialist recognition



● Recommended ● Not recommended

### SIMGs starting in 2024: Time for interim assessment



### SIMGs finishing in 2024: Total time on pathway

